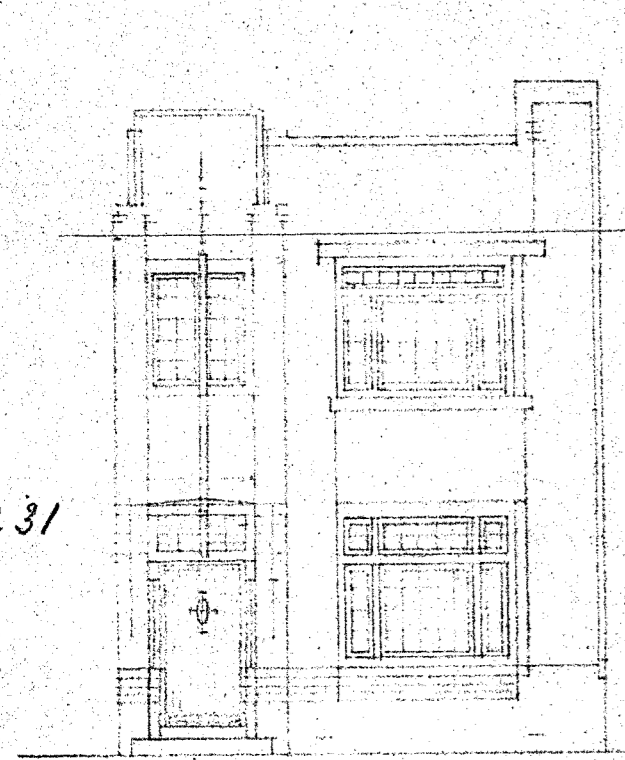
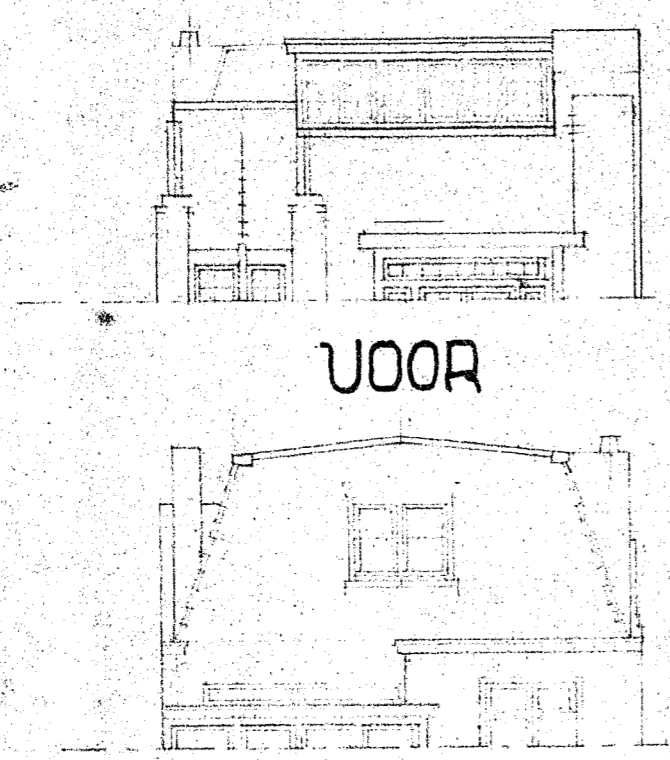


Behoort bij besluit van Burgemeester en  
Wethouders van Roosendaal en Nispen  
van  
4 oktober 1940  
Dienstjaar 1940 Bouwaanvraag no. 70

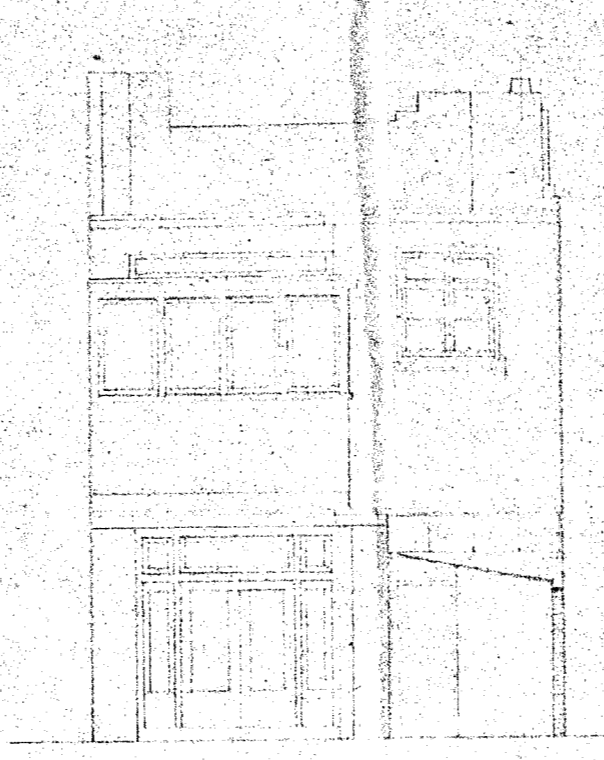
231



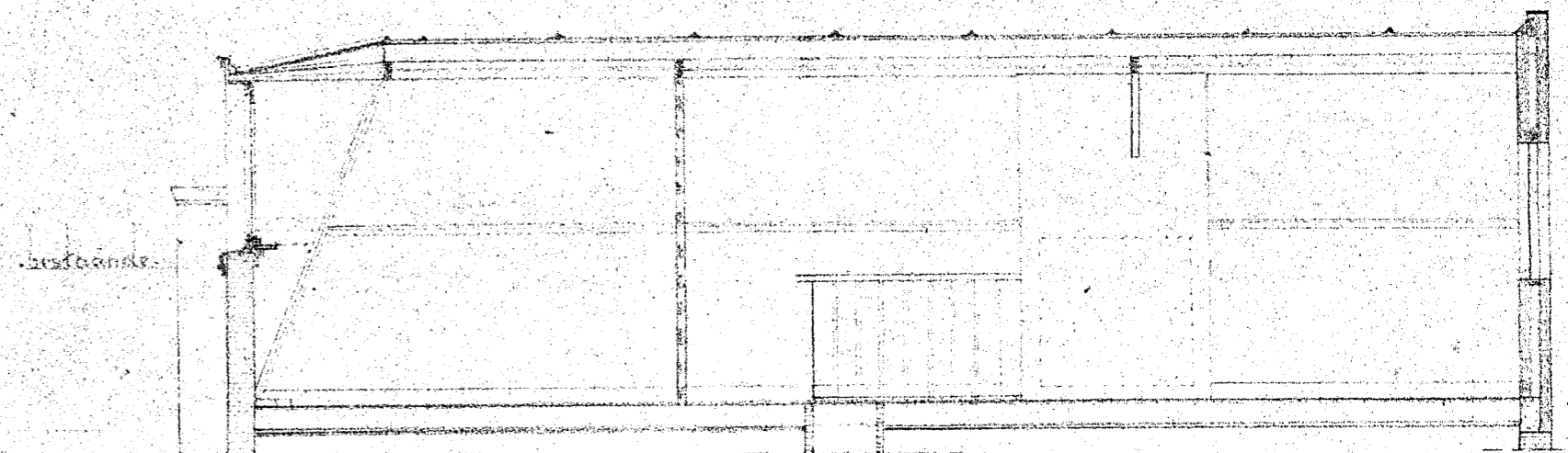
VOOR  
.. bestaand ..



VOOR  
ACHTER



ACHTER  
.. bestaand ..

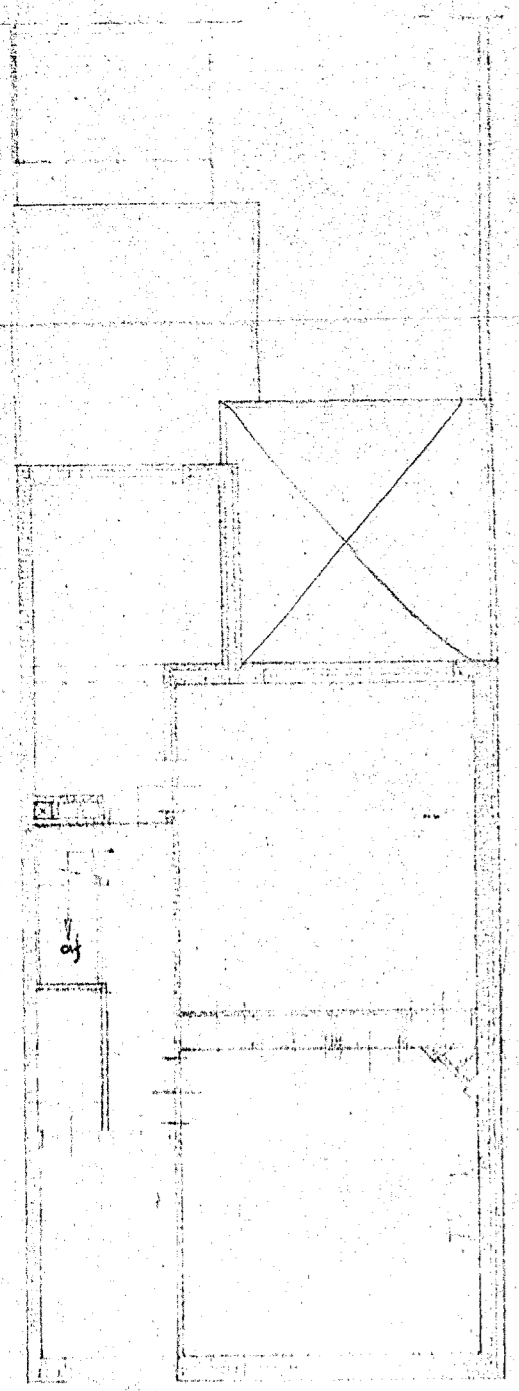


LANGSDOORSN..

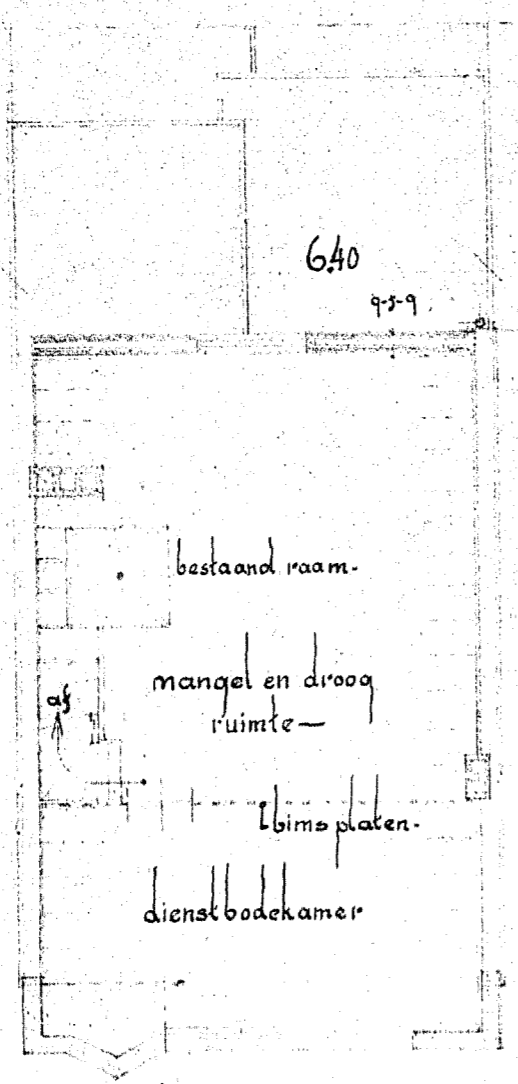
KAPPLAN VAN EEN HERENHUIS DE AAN STATIONSTRAAT TE ROSENDAAL

VOOR DEN WELED..ZEERGEL..HEER

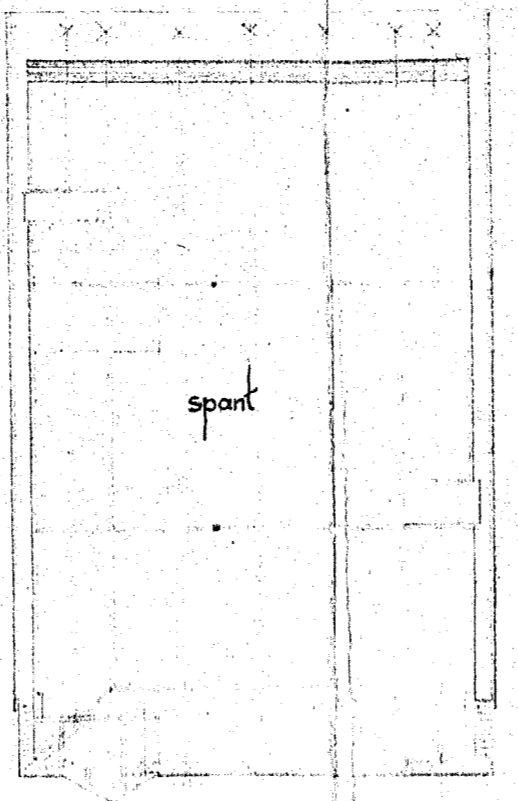
DRs. OOMEN....



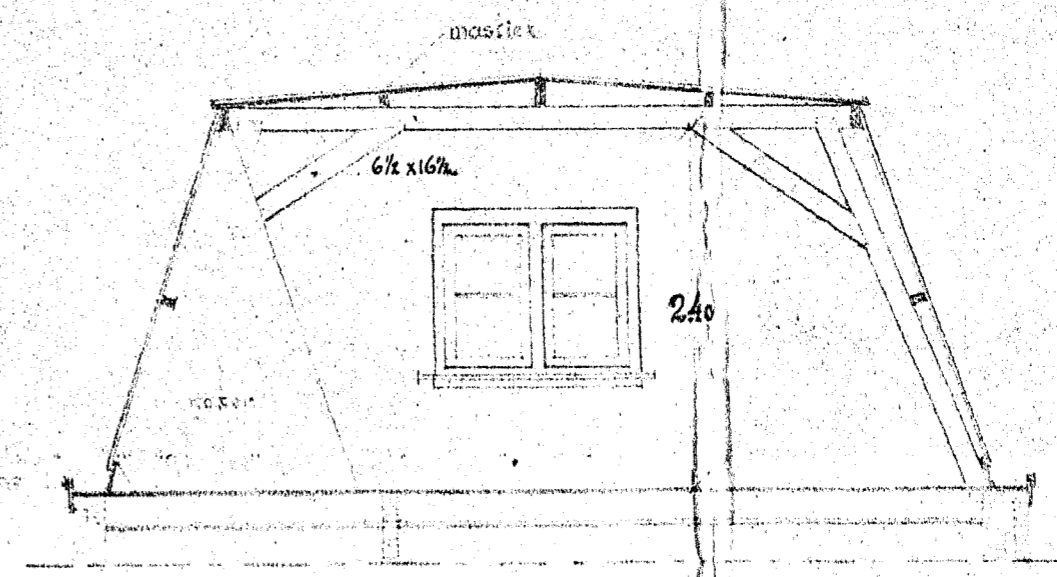
1<sup>ste</sup> VERDIEP  
.. bestaand ..



2<sup>de</sup> VERDIEP



KAP



DWARS

*L.P. Oomen*

SCHAAL 1:100  
en  
1:50

