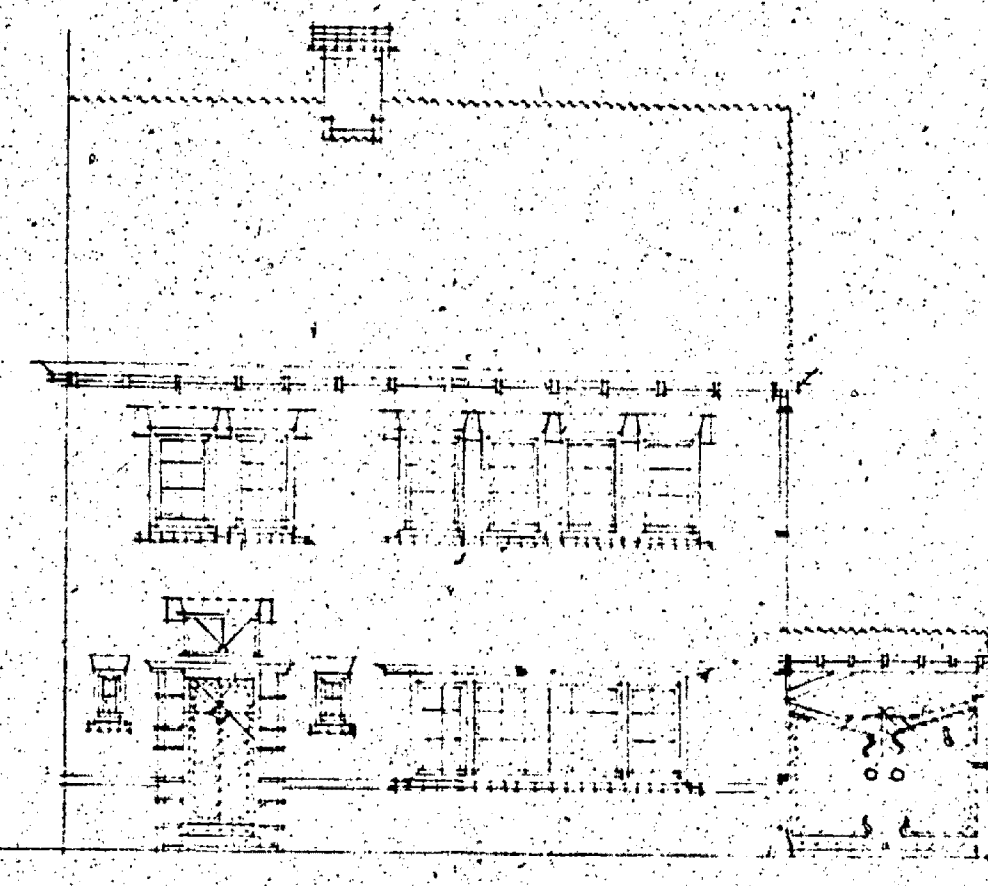


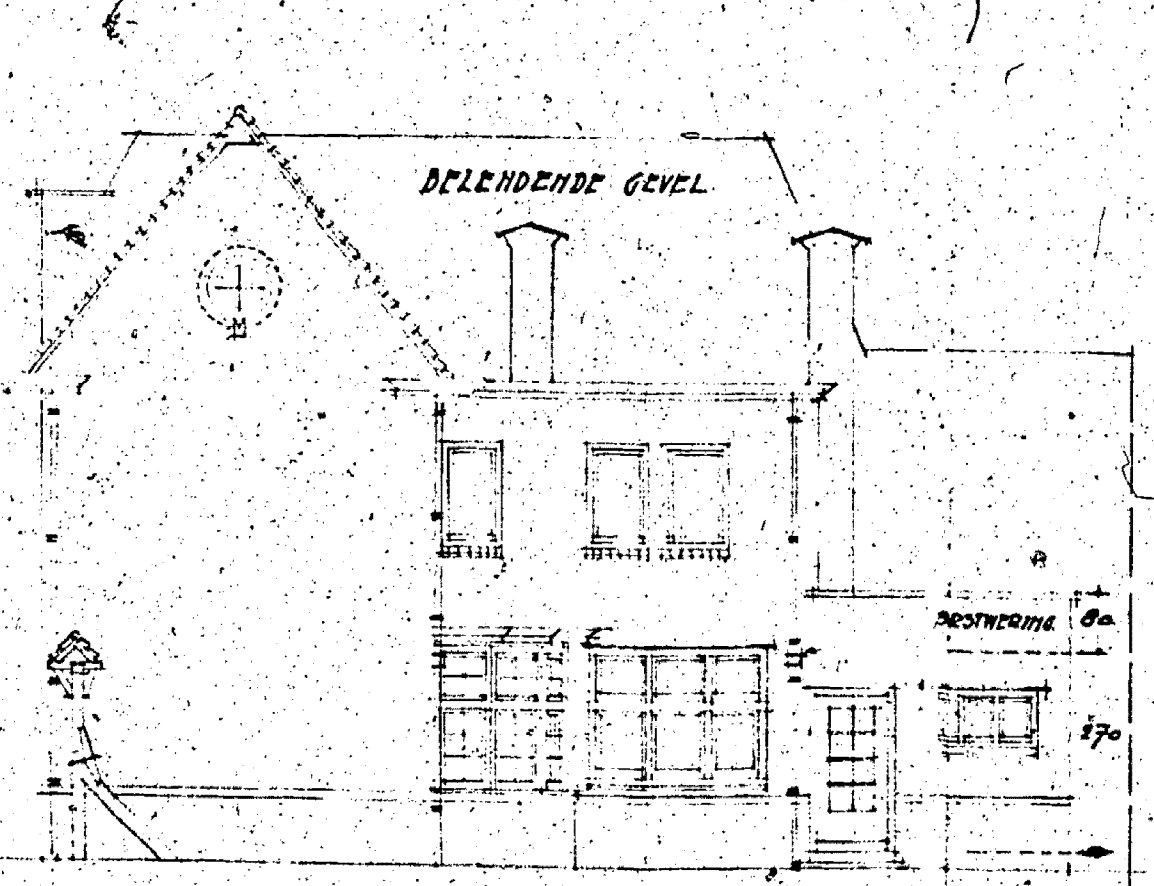
PLAN TOT HET DOUWEN VAN EEN WOONHUIS AAN DE D^e LEMMENSTRAAT TE ROOSENDAAL VOOR REKENING VAN MEVROUW COCKX-VERMUNT ALDAAR

SCHAAL 1:100.
VERKLARING.

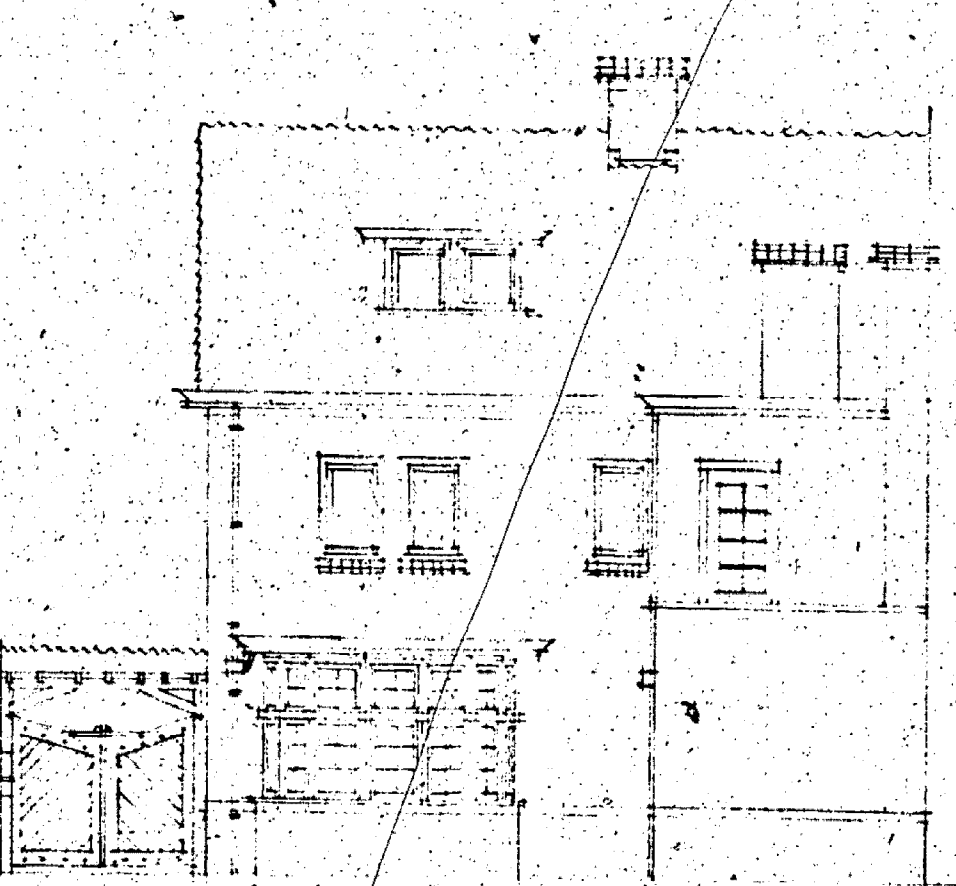
- x ANKERS.
- x STYRDALKANKERS.
- x AS: ONTSTIPPINGSSTUK.
- G.V. = GEASPALTEERD DICHTZEPER H.A.
- G.B.D. = GEWAPENDE BETONBALK.
- G.B.V. = GEWAPENDE BETONVLOER.
- w. = LODEN WATERLEIDING.
- c. = GASLEIDING.
- l. = LODEN AFVOER.
- z.w. = ZIKKEN GEMELWATERAFVOER.
- VERACHTM PLATEN DIKLEM TEGEN HETSLEWERN VAN BAKSTEEN.
- BETON.
- K.B. = KIEZELBANK.



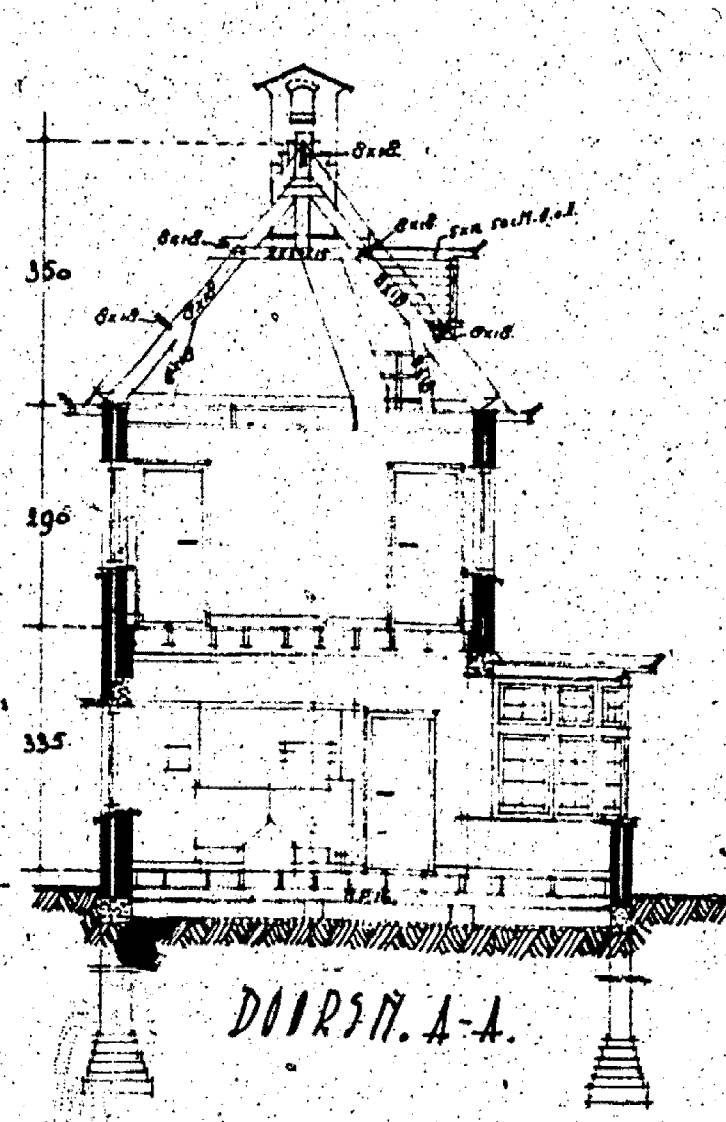
VOORGEVEL



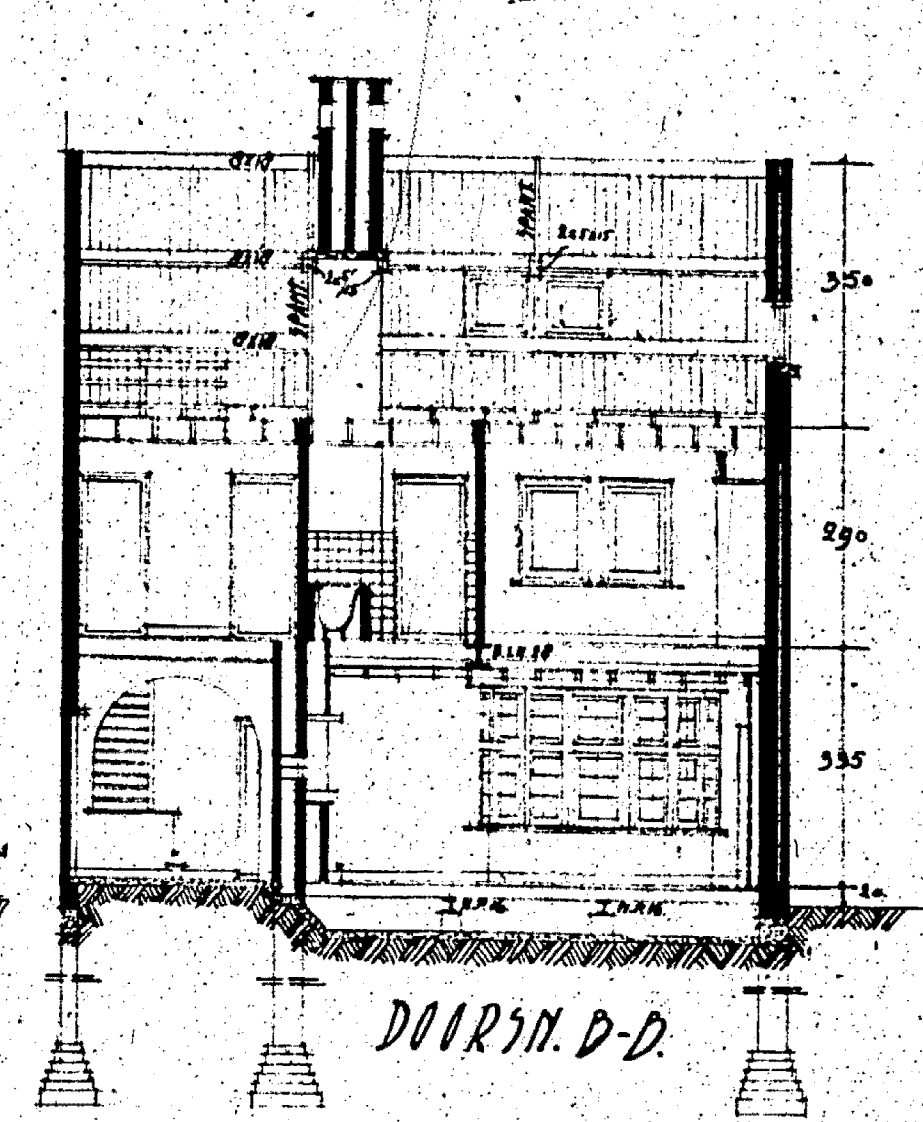
RECHTER ZYGEVEL



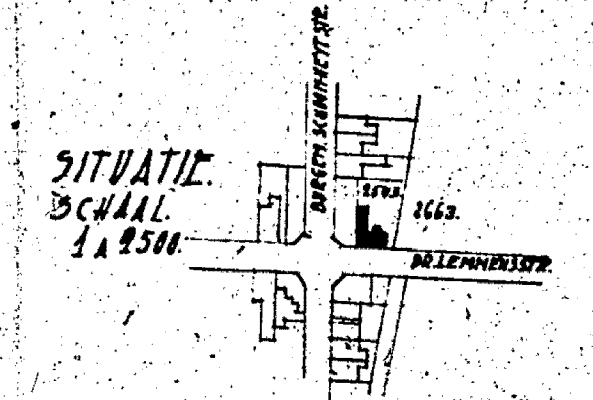
ACHTERGEVEL



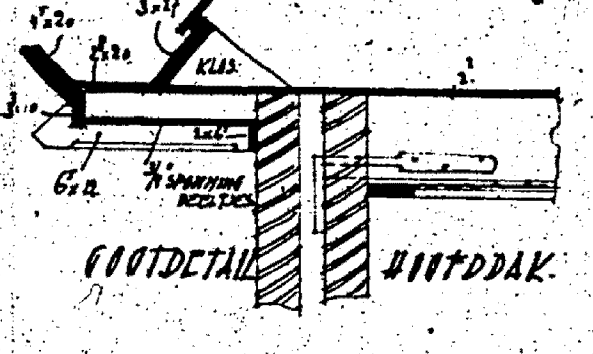
DOORSN. A-A.



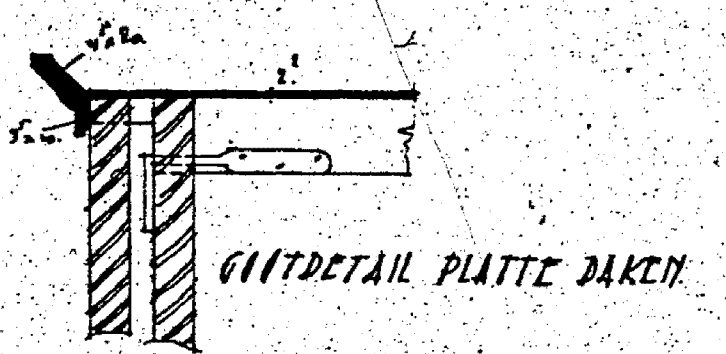
DOORSN. D-D.



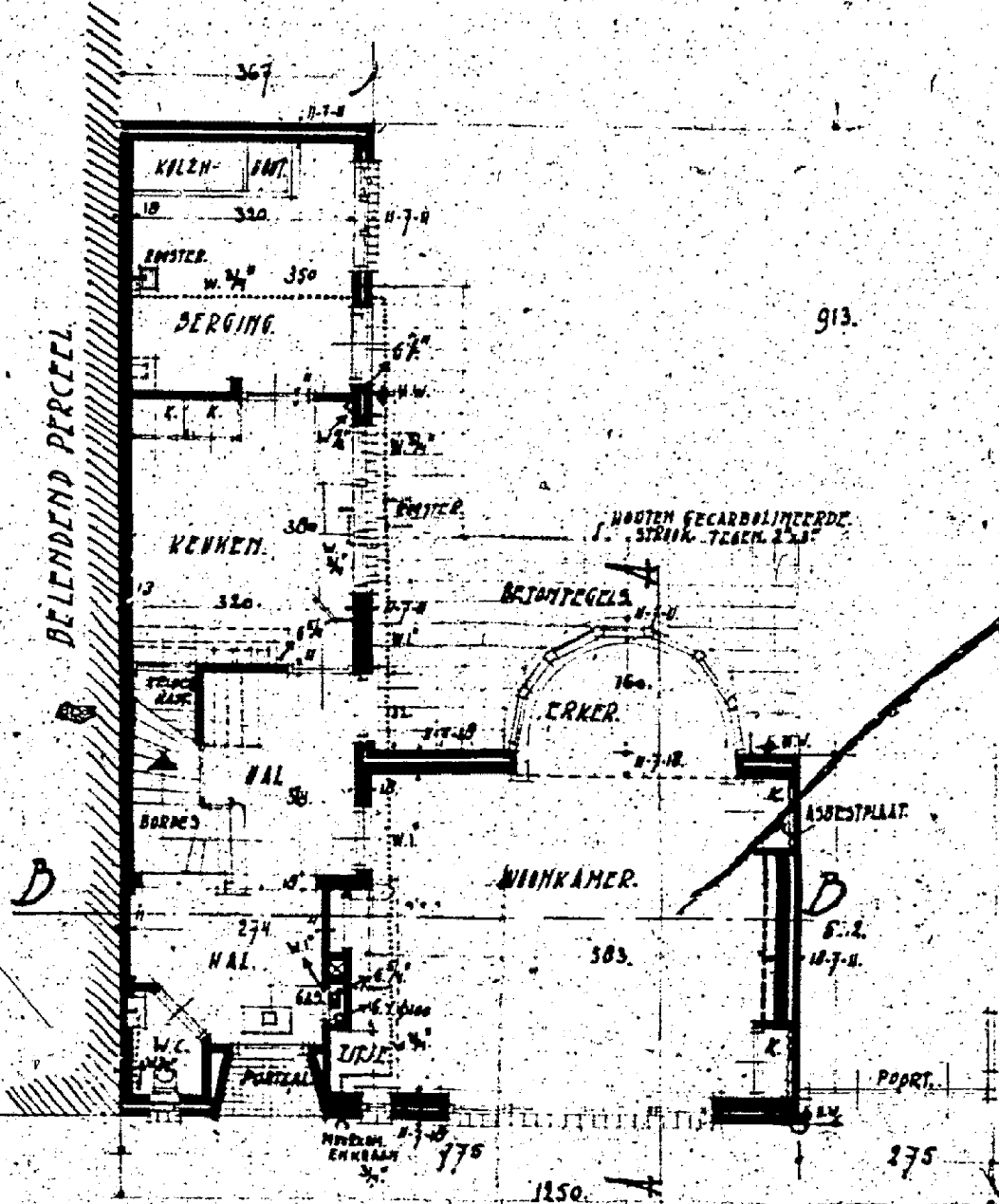
SITUATIE
SCHAAL 1:2500.



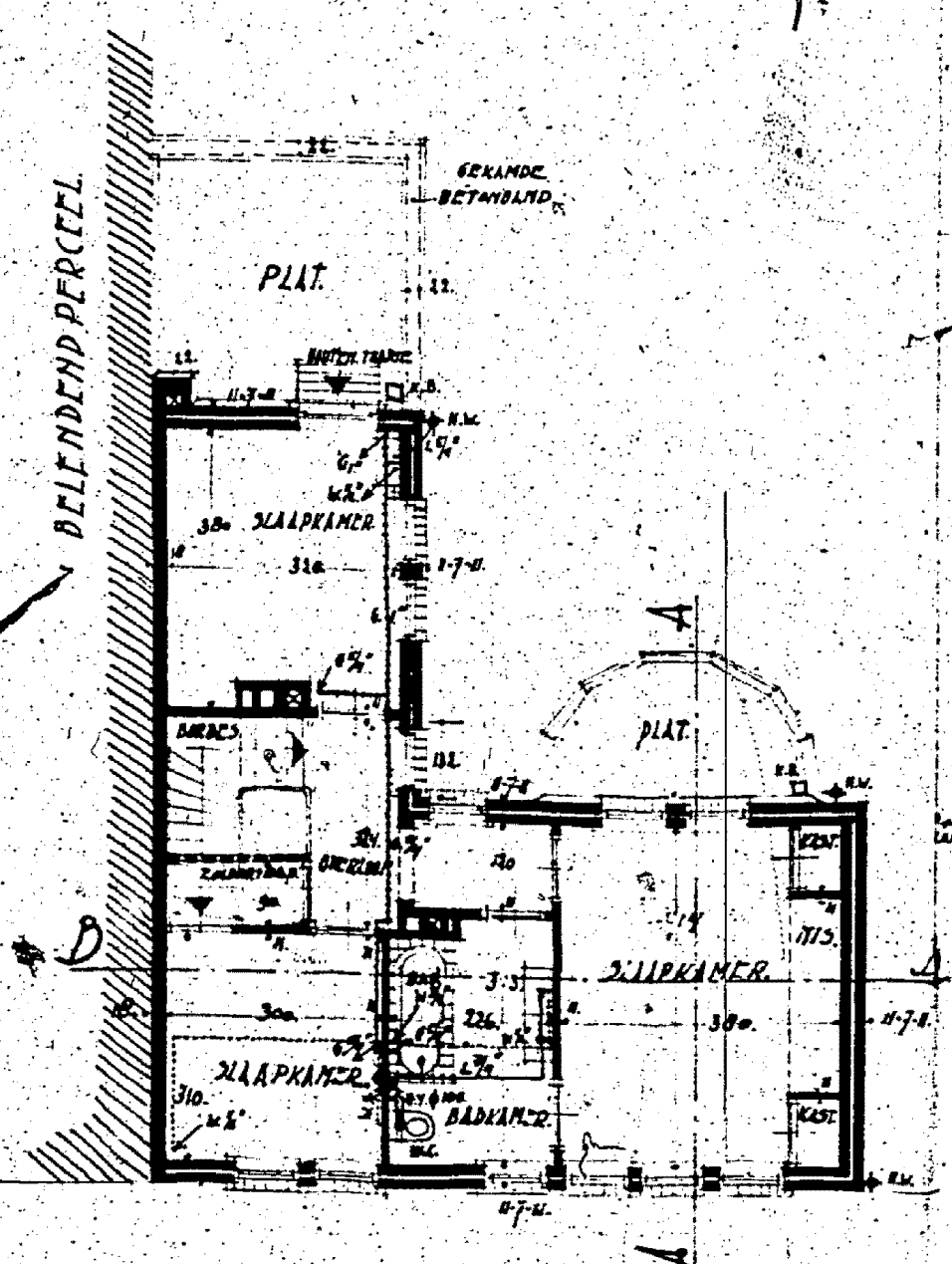
GIFTDETAIL HOUTDRAK.



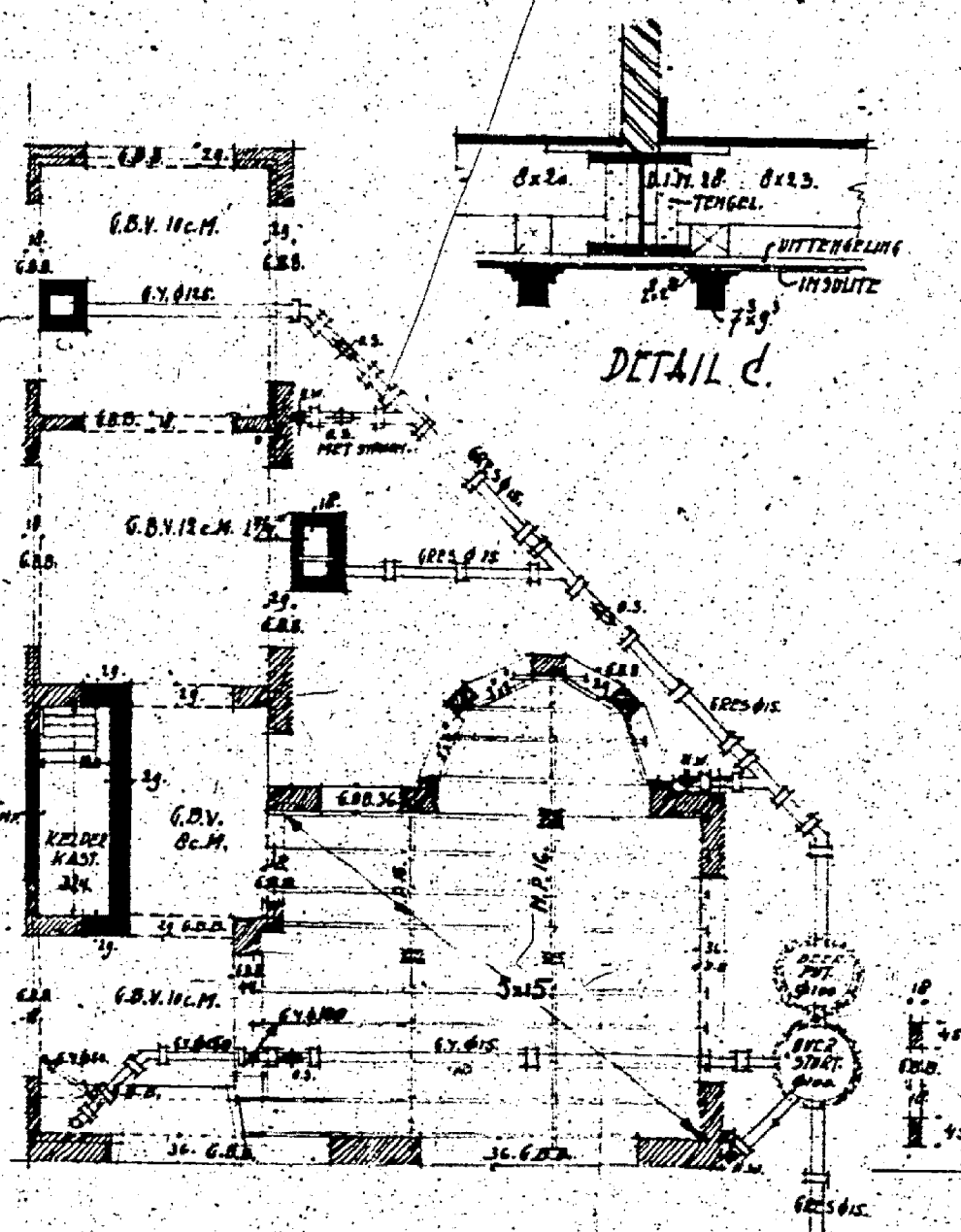
GIFTDETAIL PLATTE DAKEN.



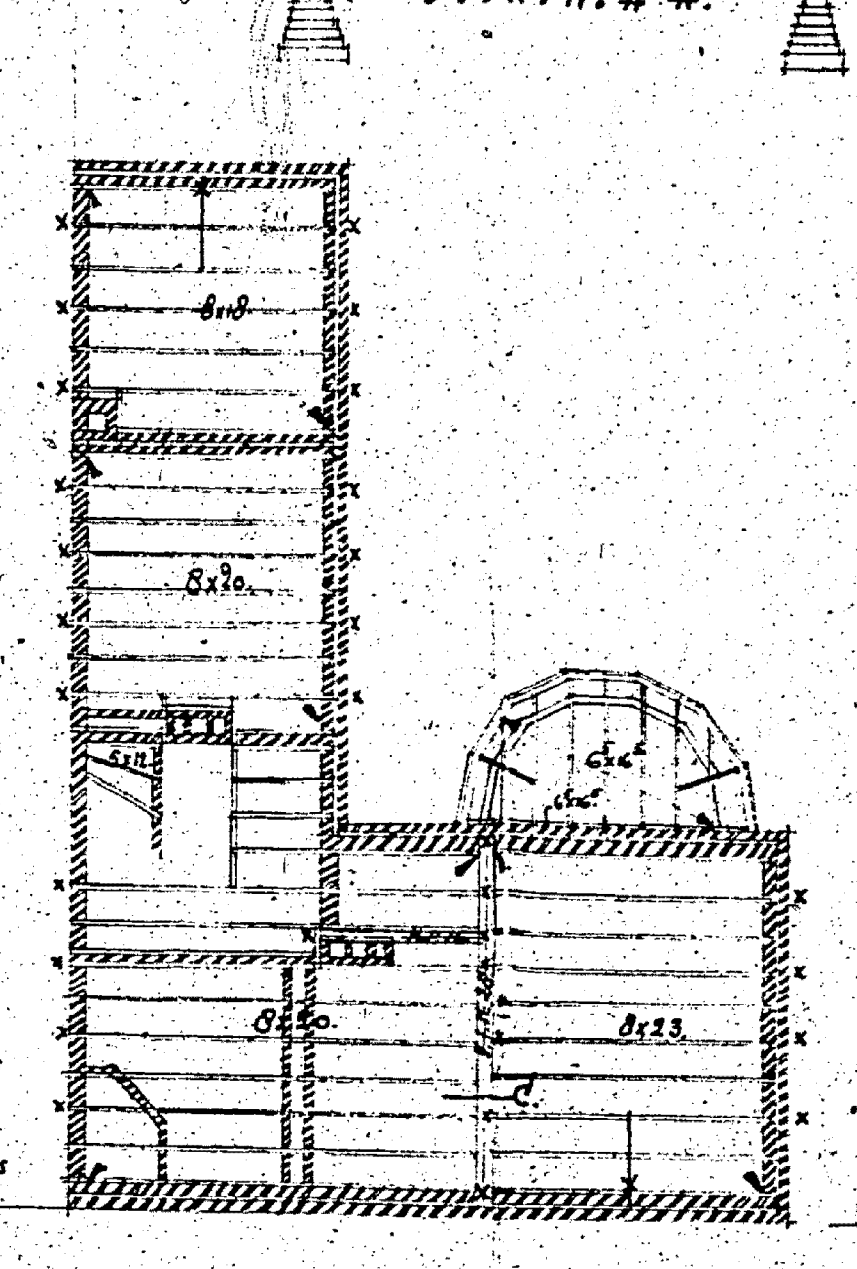
DE GANE GROND



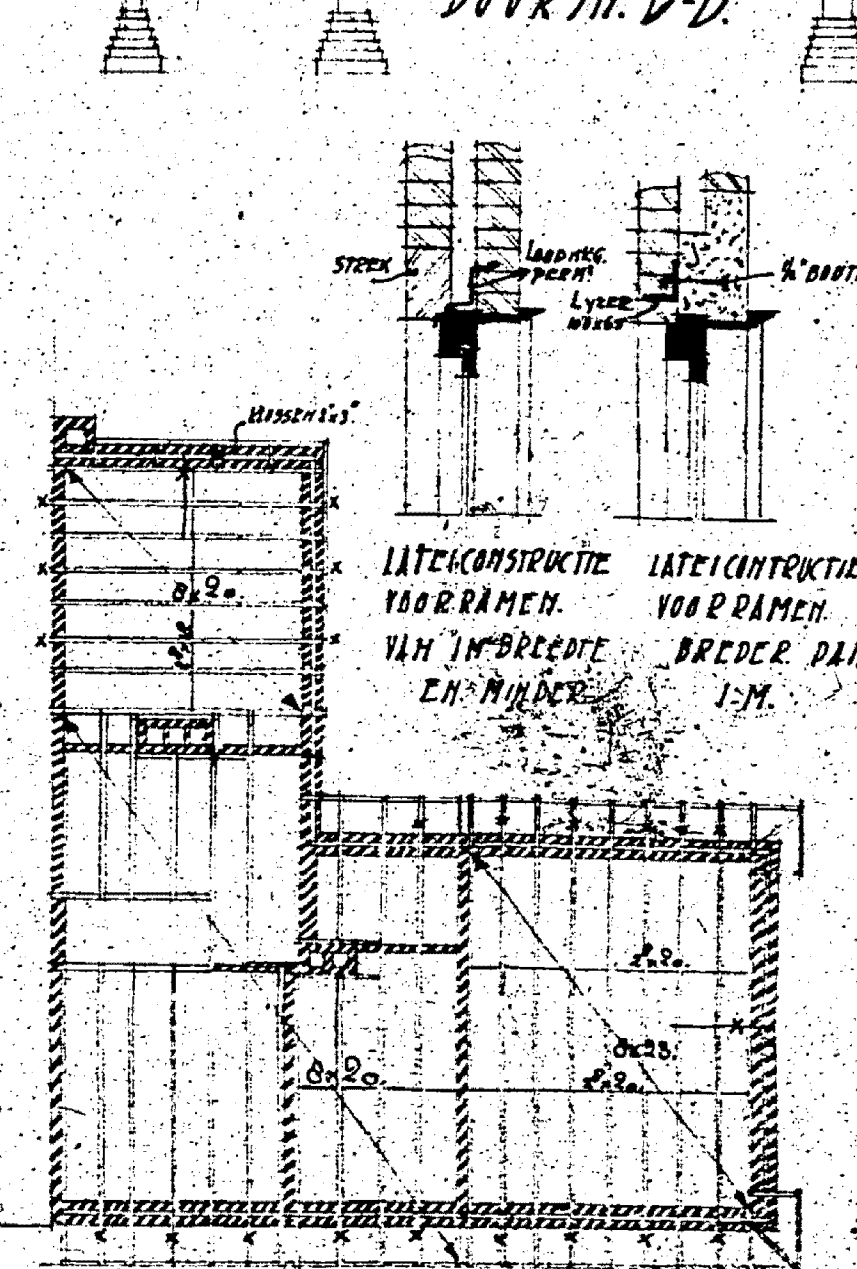
VERDIEPING



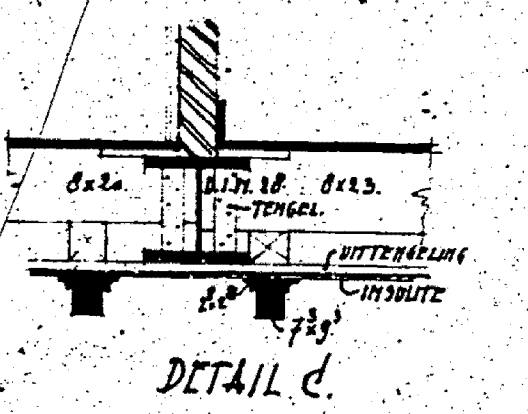
FUNDERING-DIPLERING
EERSTE DALKLAAG



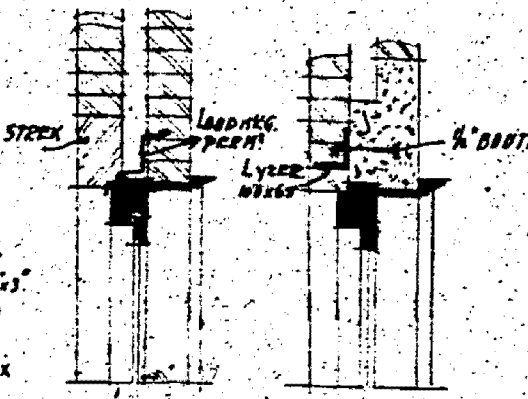
TWEDE DALKLAAG



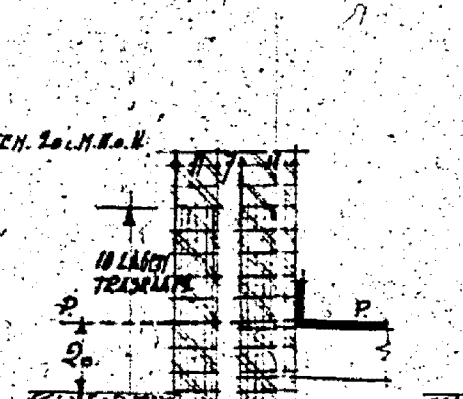
DERDE DALKLAAG



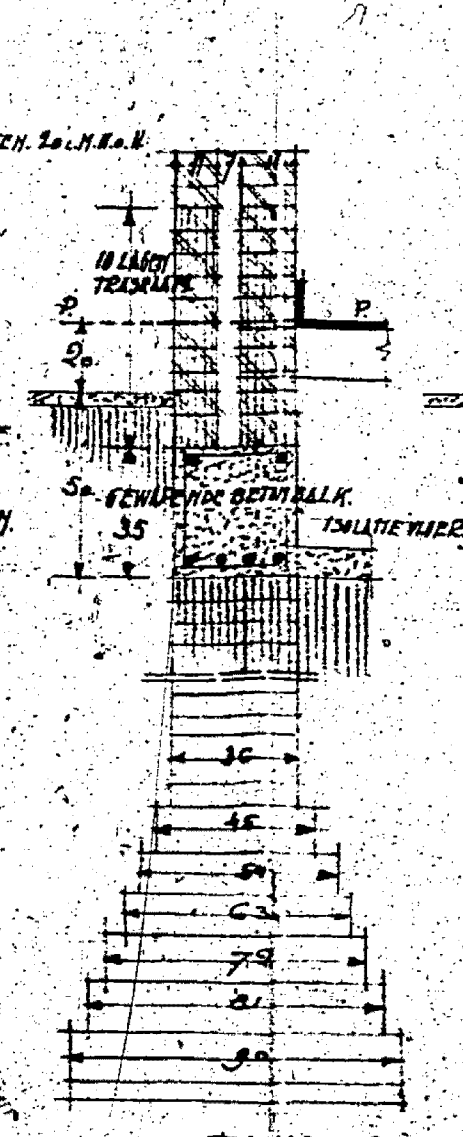
DETAIL C.



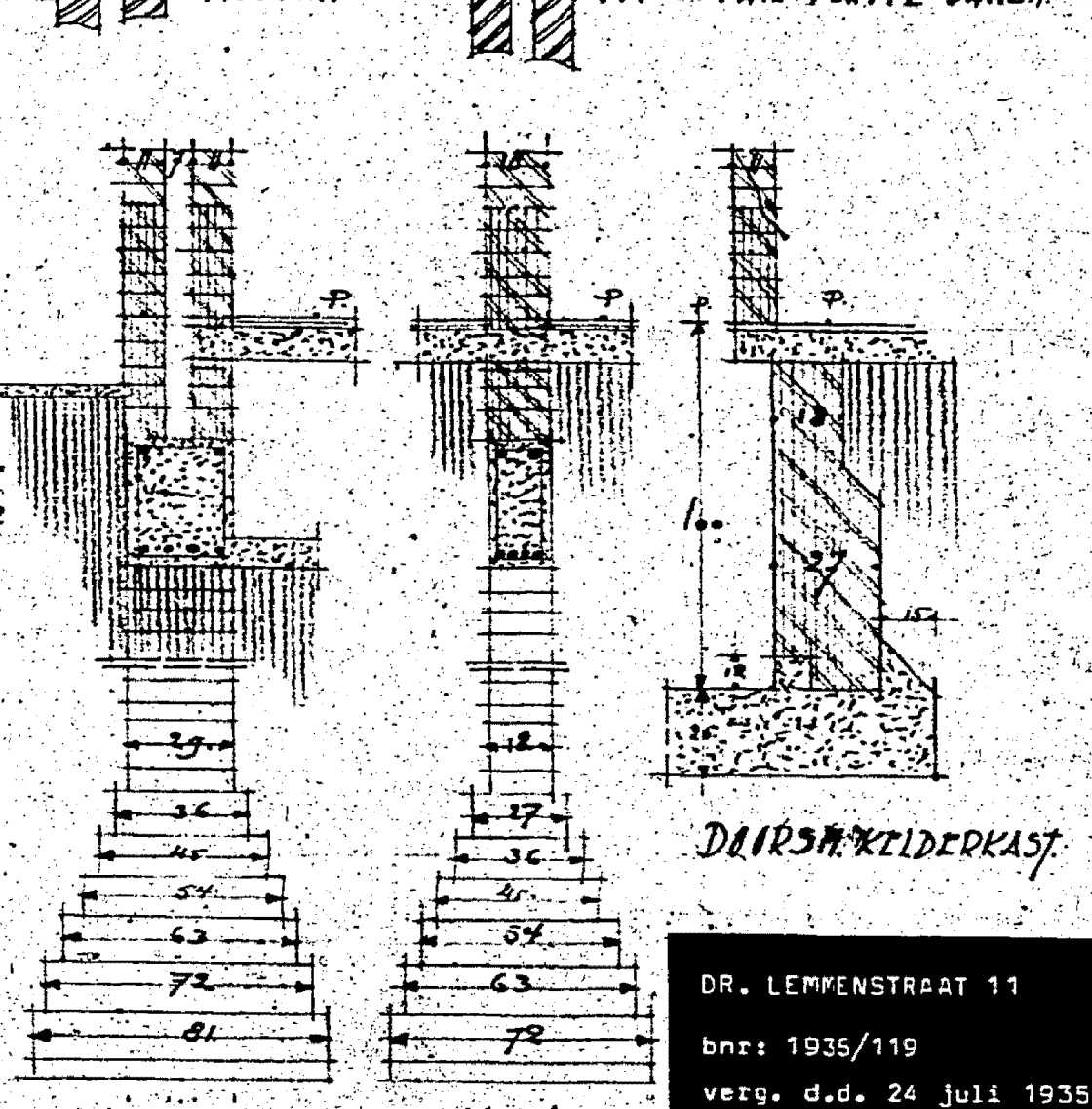
LATECONSTRUCTIE
VOOR RAMEN.
VAN INBREEDTE
EN HULDER.



LATECONSTRUCTIE
VOOR RAMEN.
BREDER DAN
1-M.



TUINDERINGDETAILS
SCHAAL 1:20.



DOORSN. KILDERKAST.

DR. LEMMENSTRAAT 11
bnt: 1935/119
verg. d.d. 24 juli 1935

ROOSENDAAL 19 JUNI 1935 JAC. WURPS. ARCHITECT