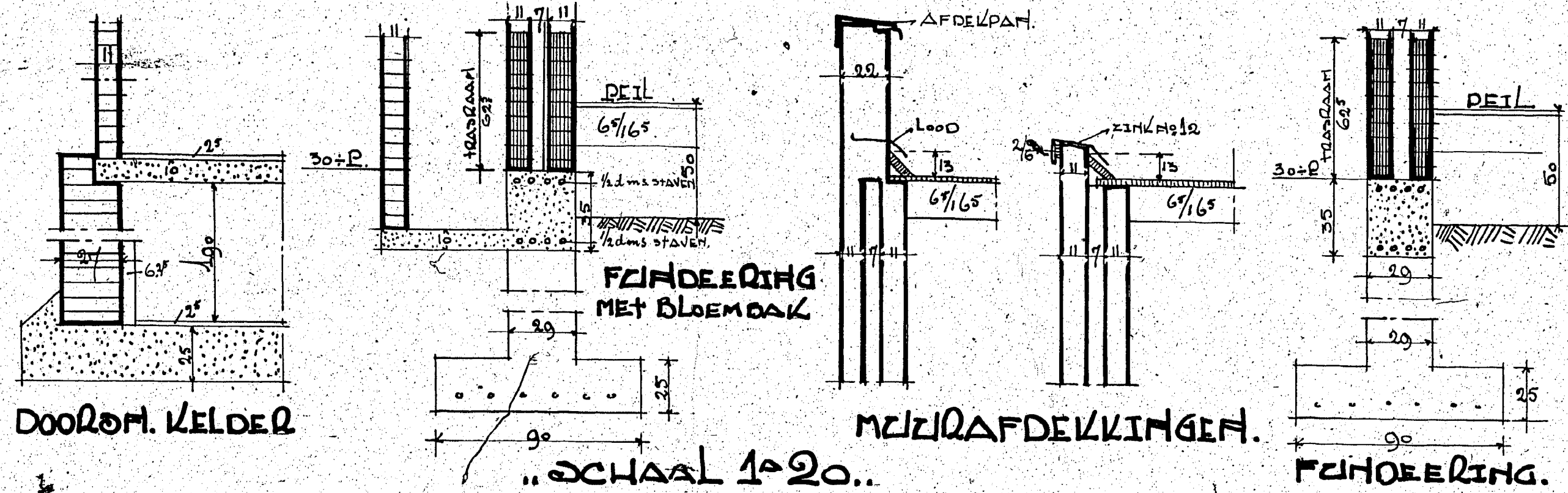


PLAN VOOR HET BOUWEN VAN EEN WOONHUIS
 4% LUDWIGSTRAAT TE ROOSENDAAL
 VOOR BEKENING VAN DEN VELED. HEED
 D. VAN ECK TE OUDENBOSCH..

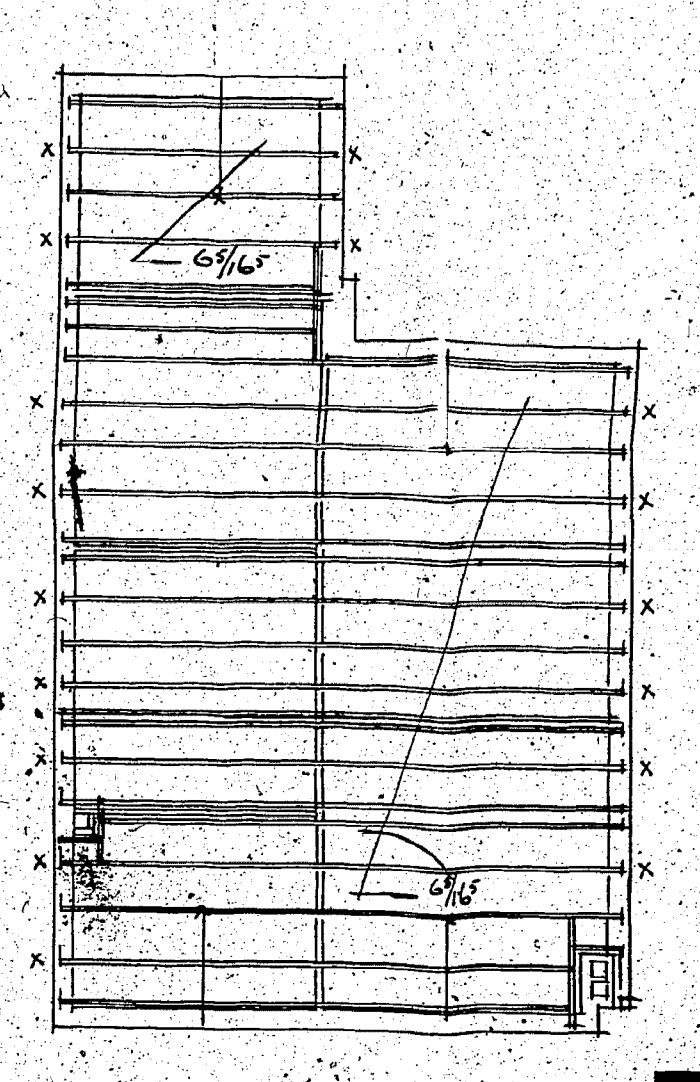
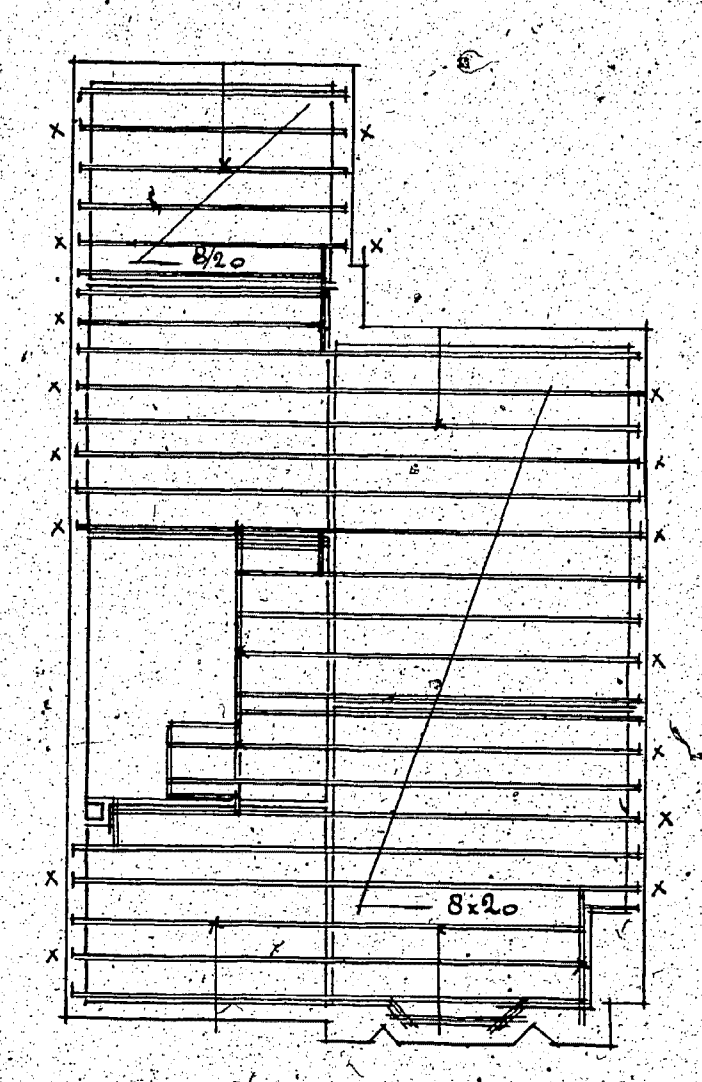
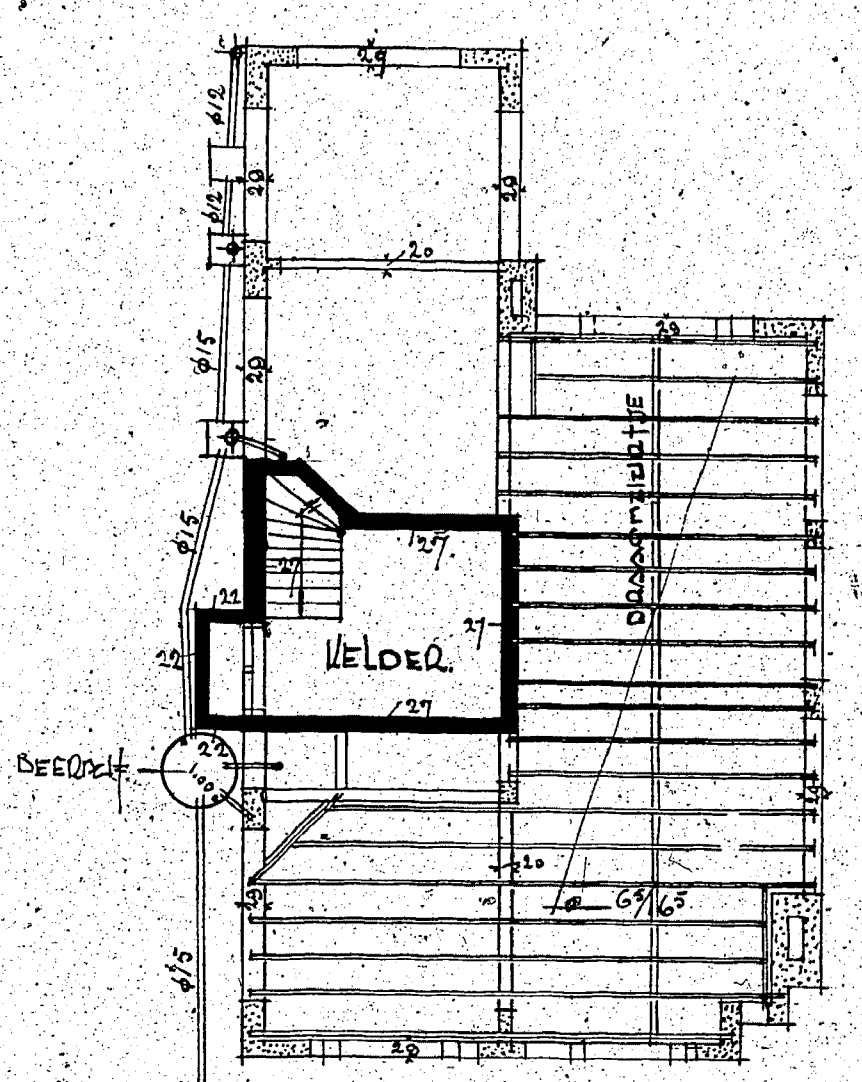
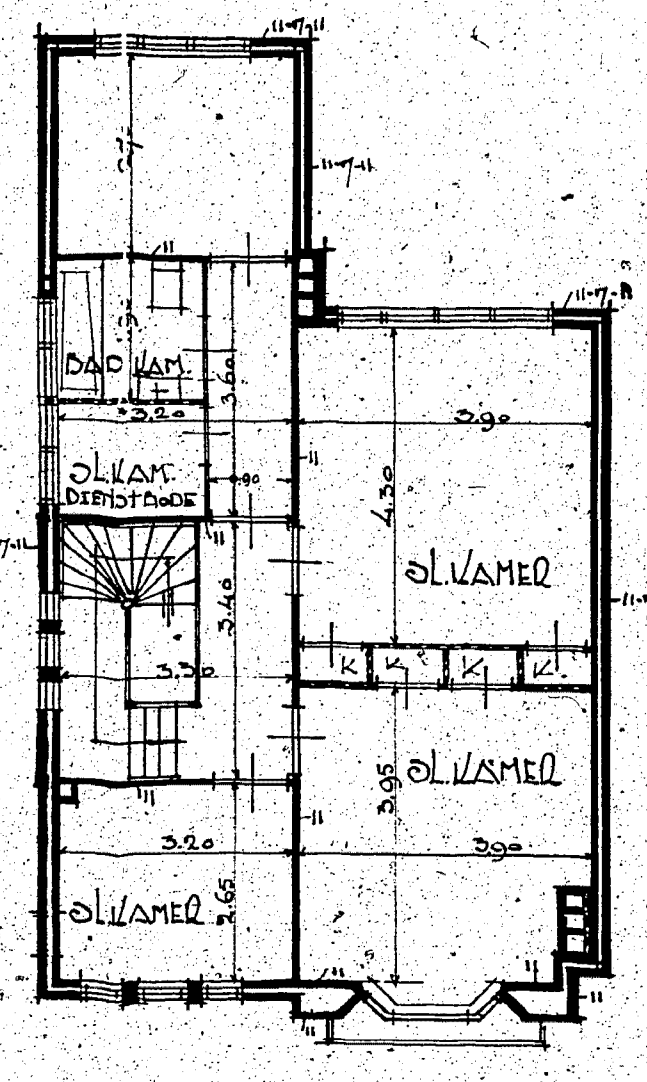
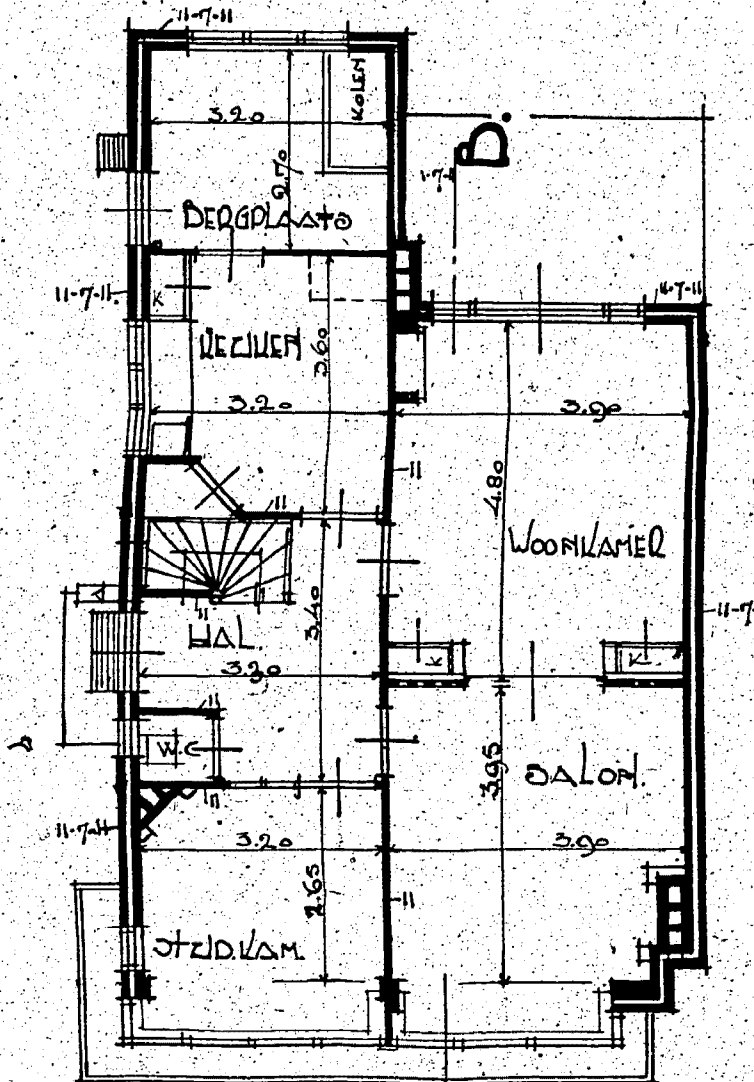
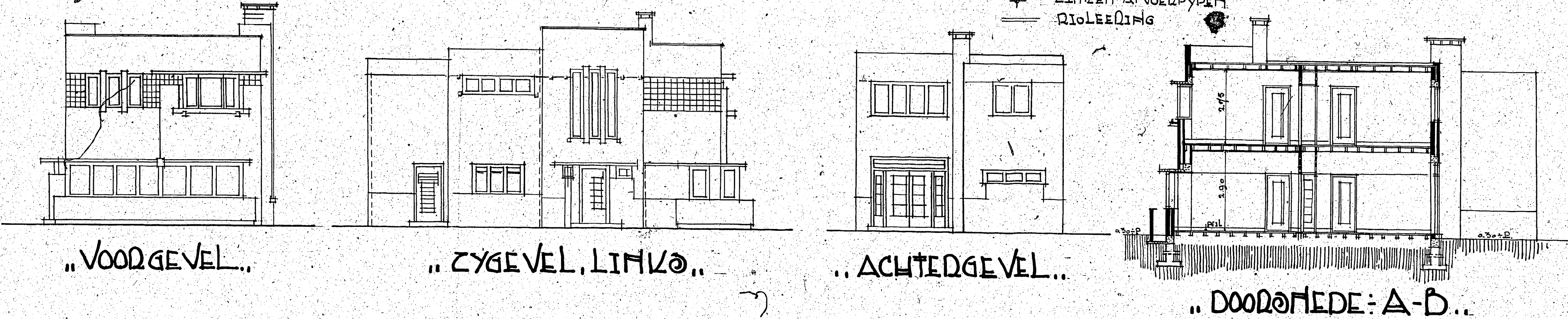
ROOSENDAAL OCT. 1929

D. VAN ECK

JAC. WILKES



- DRAGMIDDELTJE.
- VERKLARING..
- x ANILERS
 - x STYLVANILERS
 - WANDEN VAN GIPSPLAATEN
 - PLINTJE
 - ZINKEN AFVOERPYPEN
 - RIJOLEERING



LUDWIGSTRAAT 31
 bnr: 1929/135
 verg. d.d. 6 nov. 1929

SCHAAL 1:100

