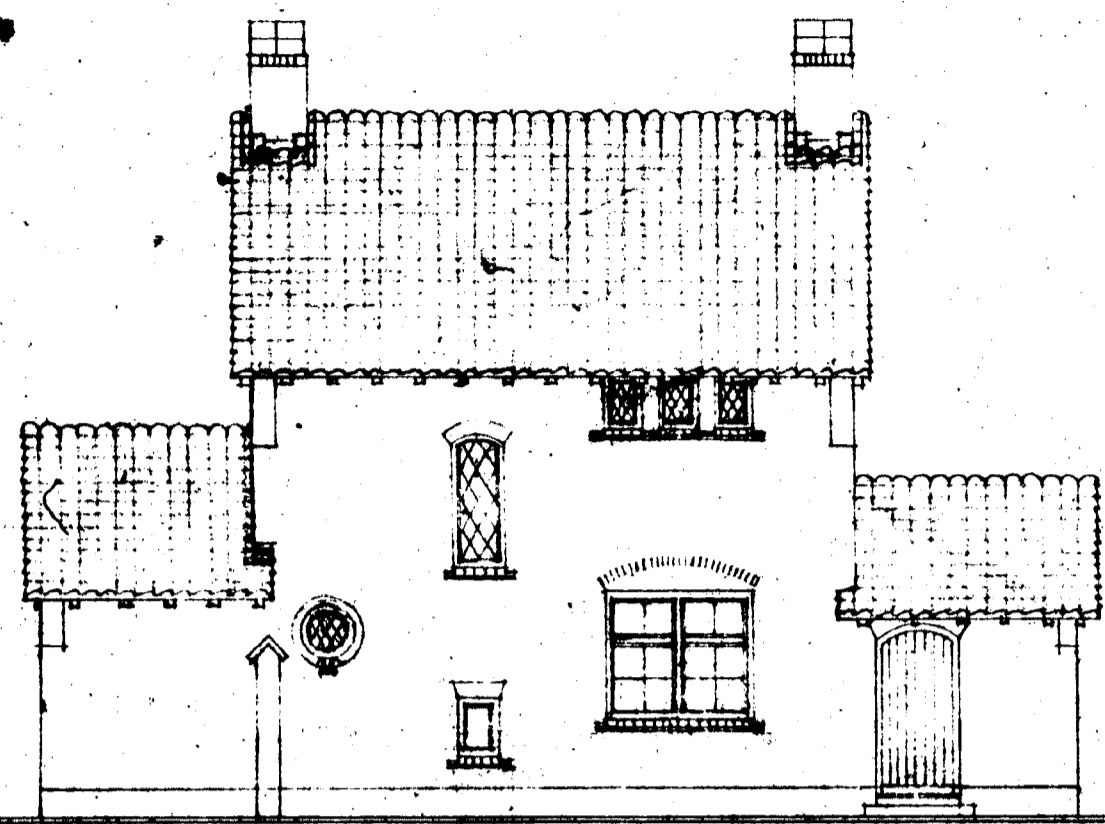
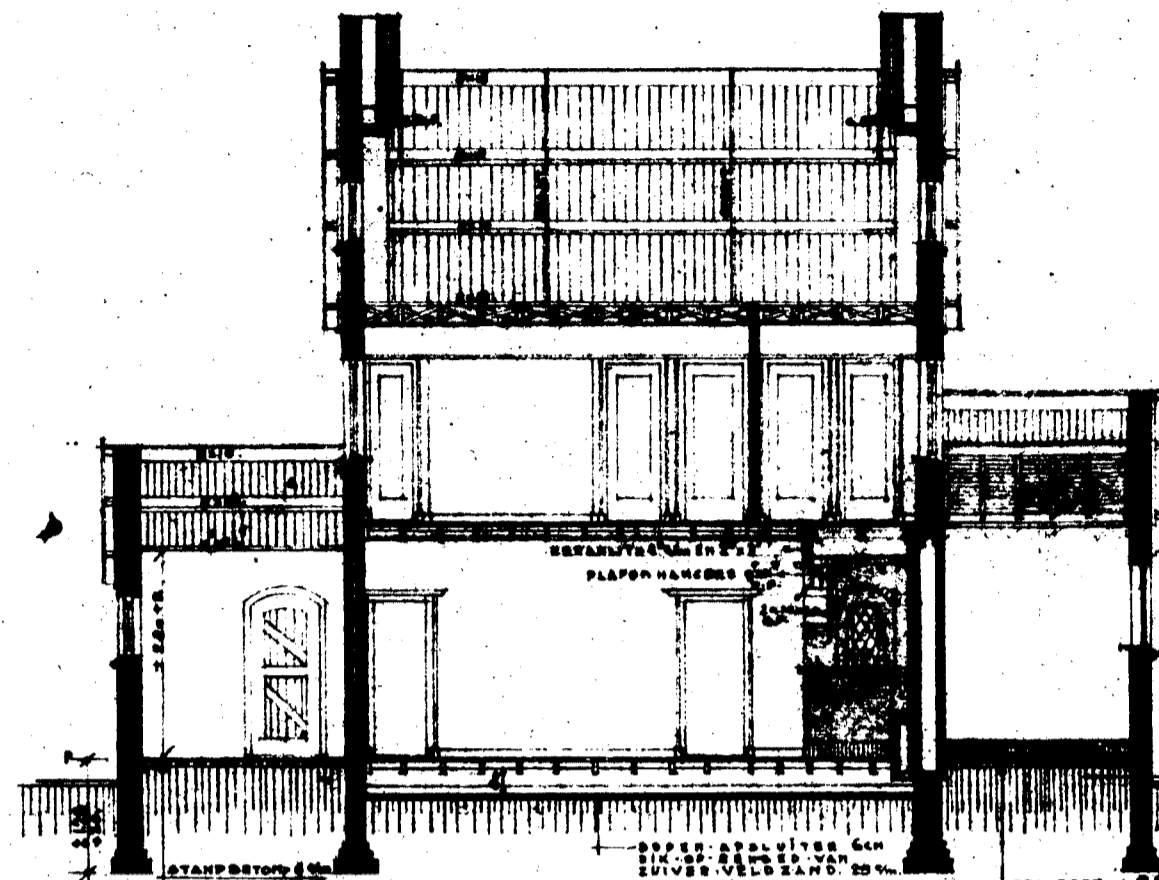


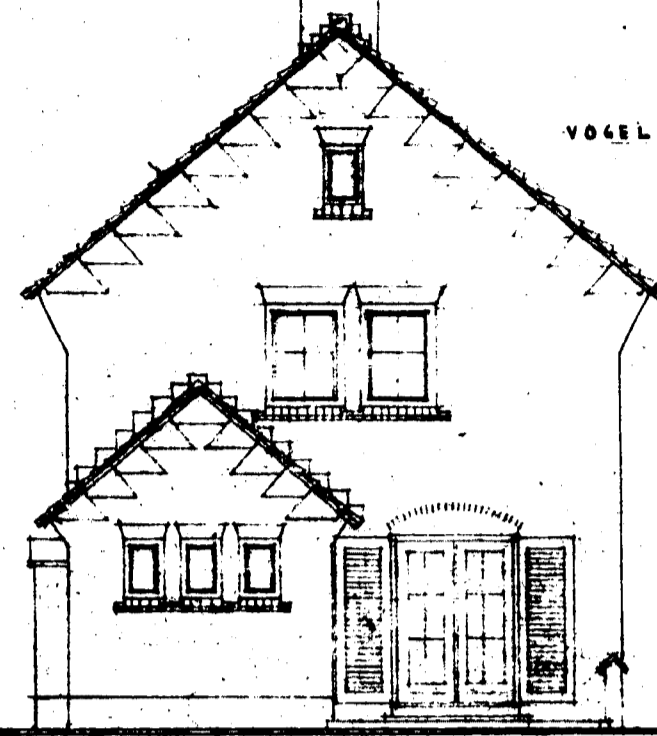
24083



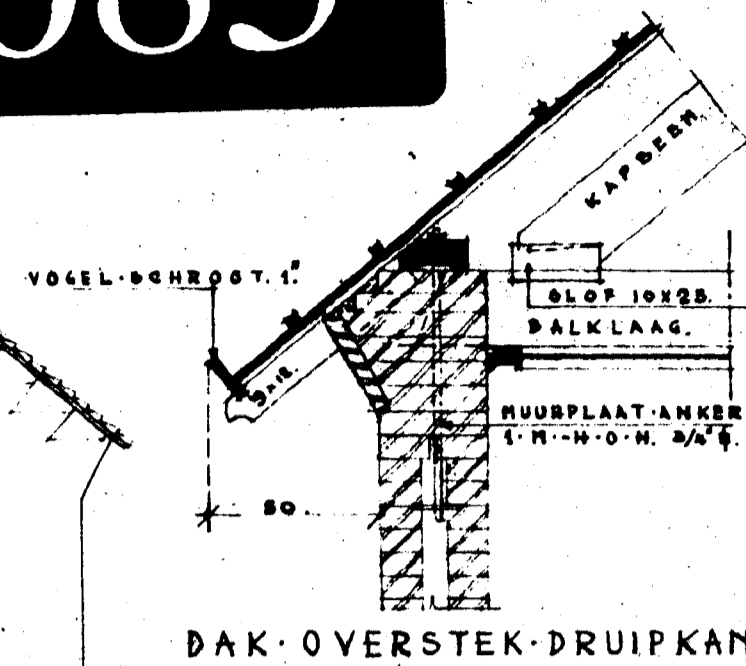
ACHTER GEVEL.



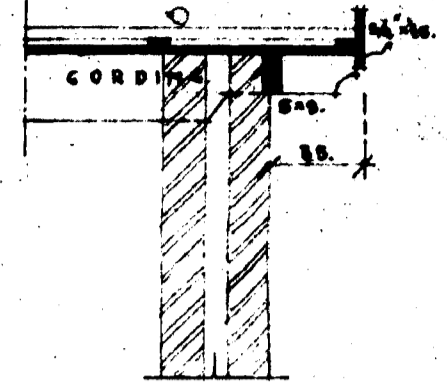
DOORSNED E. F.



LINKER ZIGEVEL.



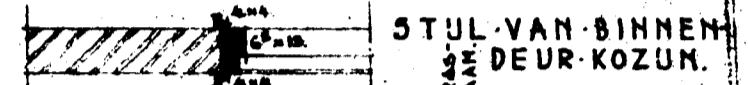
DAK-OVERSTEK DRUIPKANTEN.



DAK-OVERSTEK TOPGEVELS.



STUL VAN RAAM KOZUN.

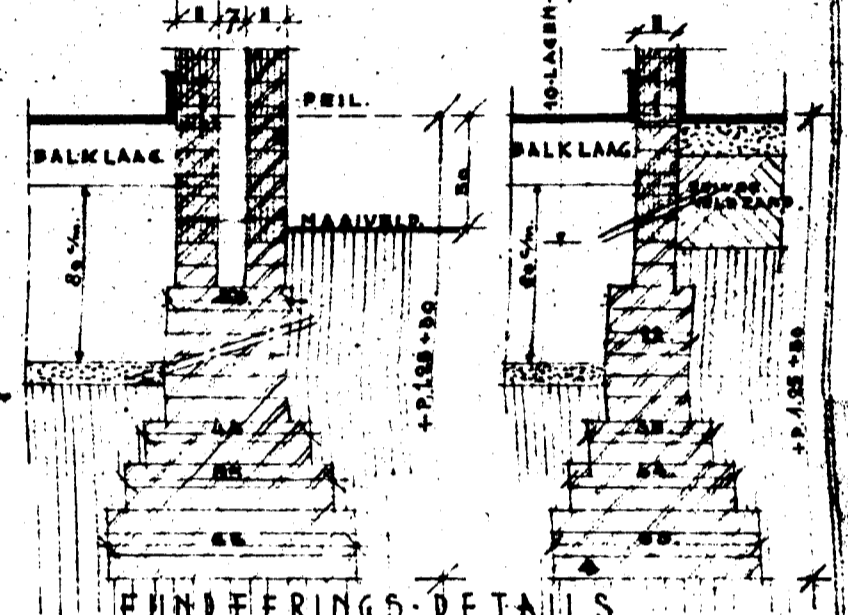


STUL VAN BINNEN DEUR KOZUN.

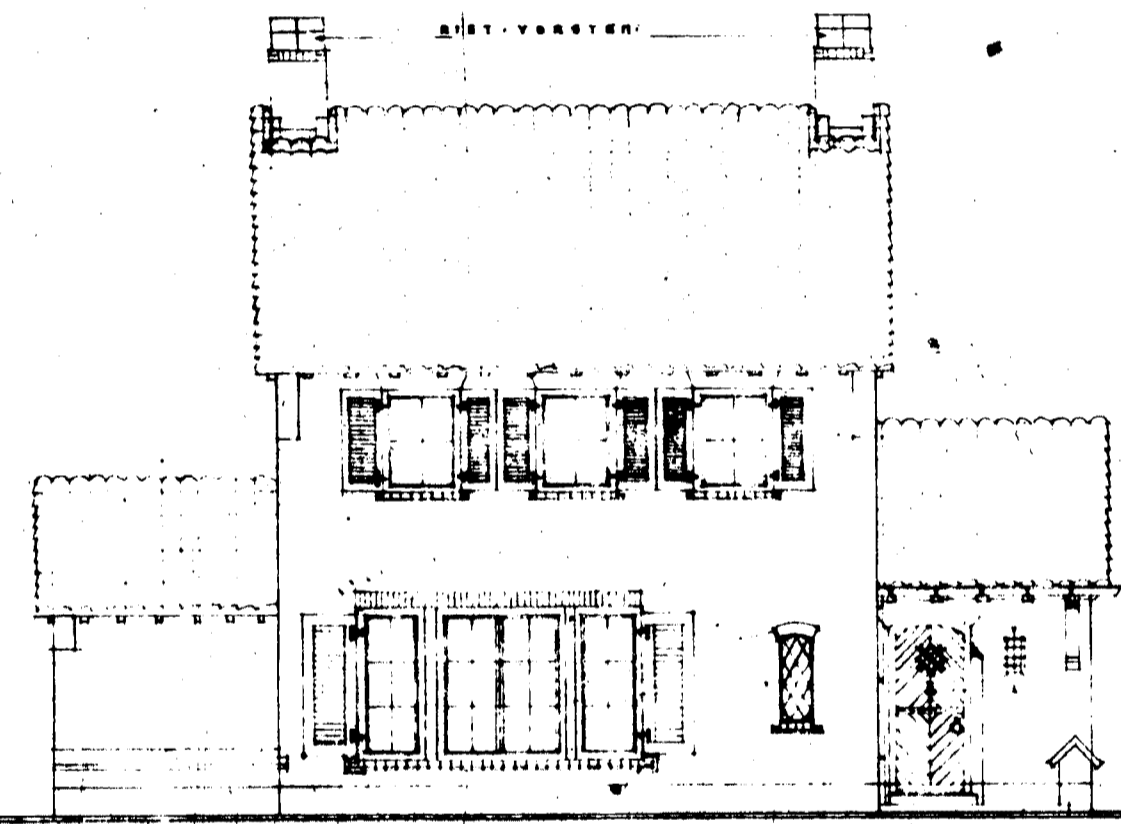
SITUATIE-DE GEMEENTE ROOSENDAAL



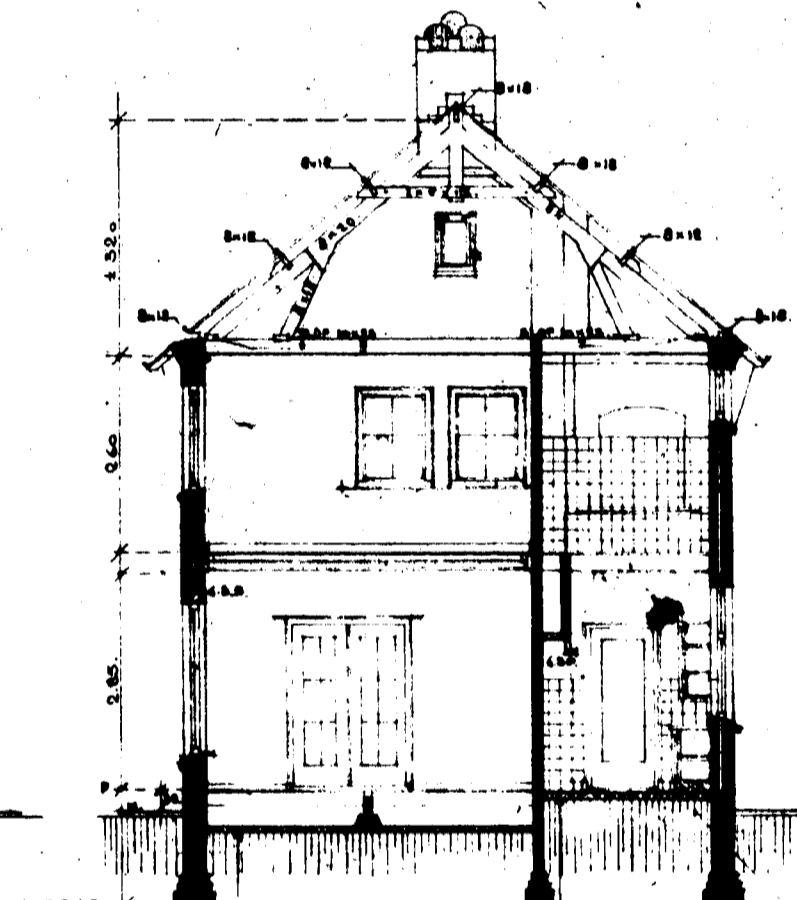
GEDEELTE-SECTIE A. NUMMER 2854.



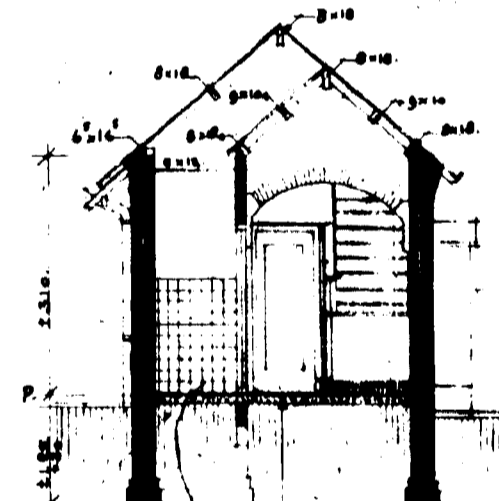
FUNDERINGS-DETAILS.



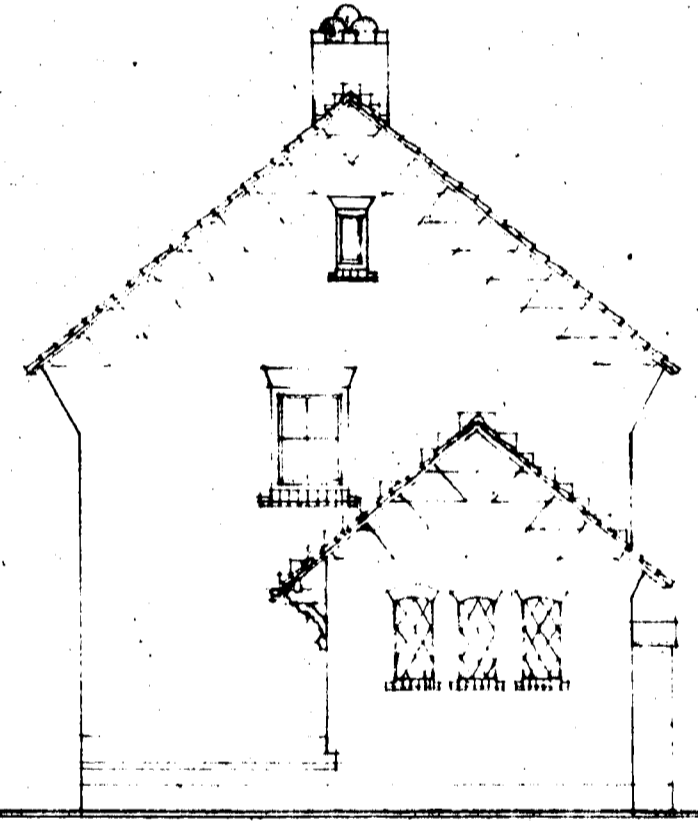
VOORGEVEL.



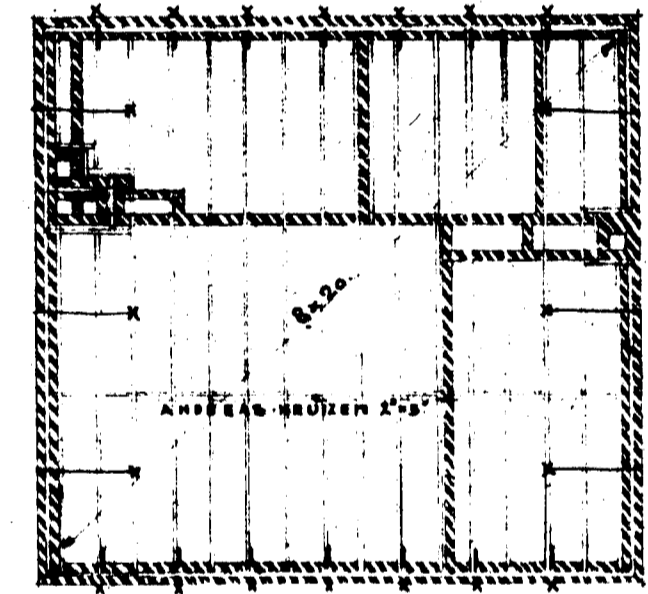
DOORSNED E. A. D.



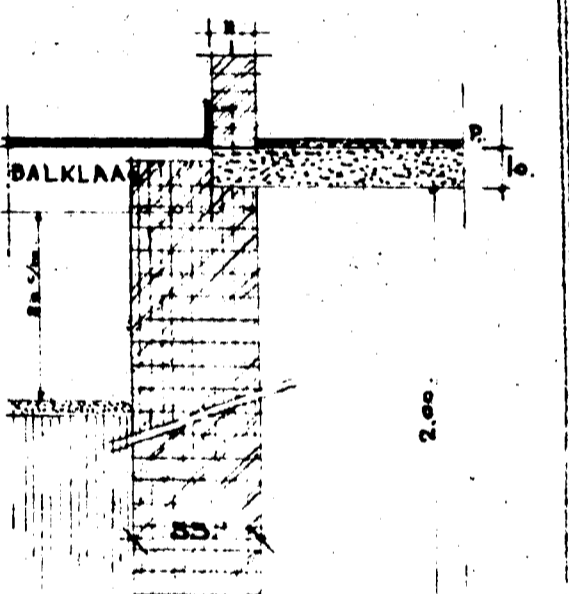
DOORSNED E. C. D.



RECHTER ZIGEVEL.



DERDE BALKLAAG

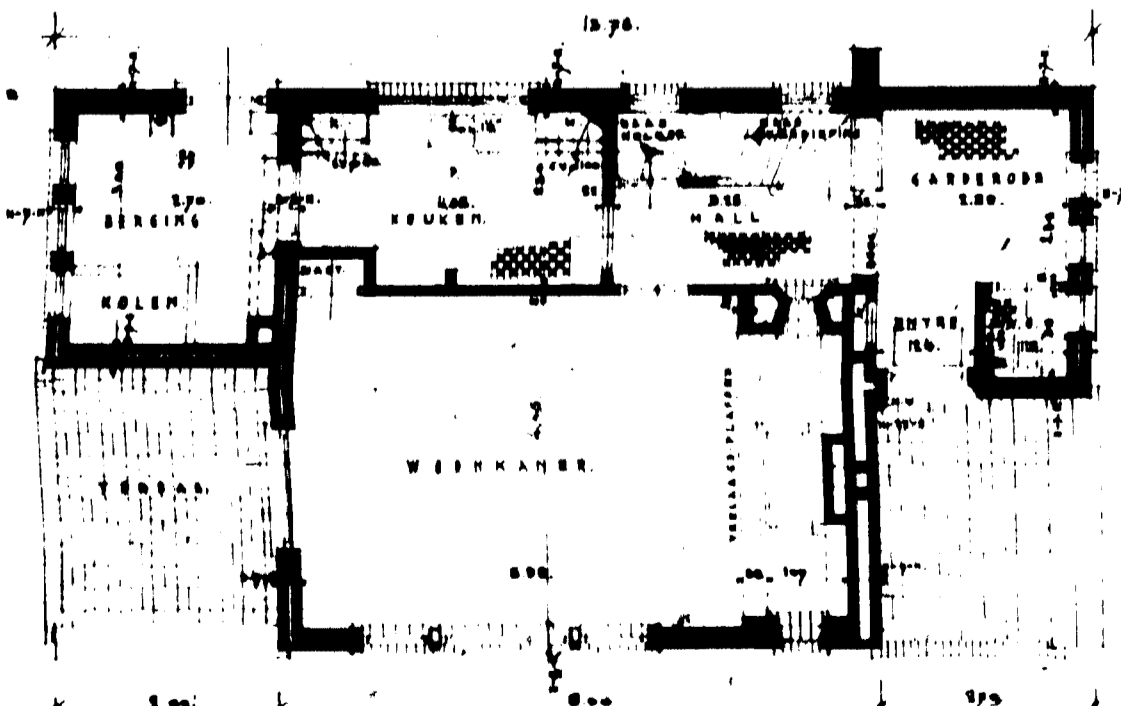


KELDER-VLOER PIJK-LAGEN.

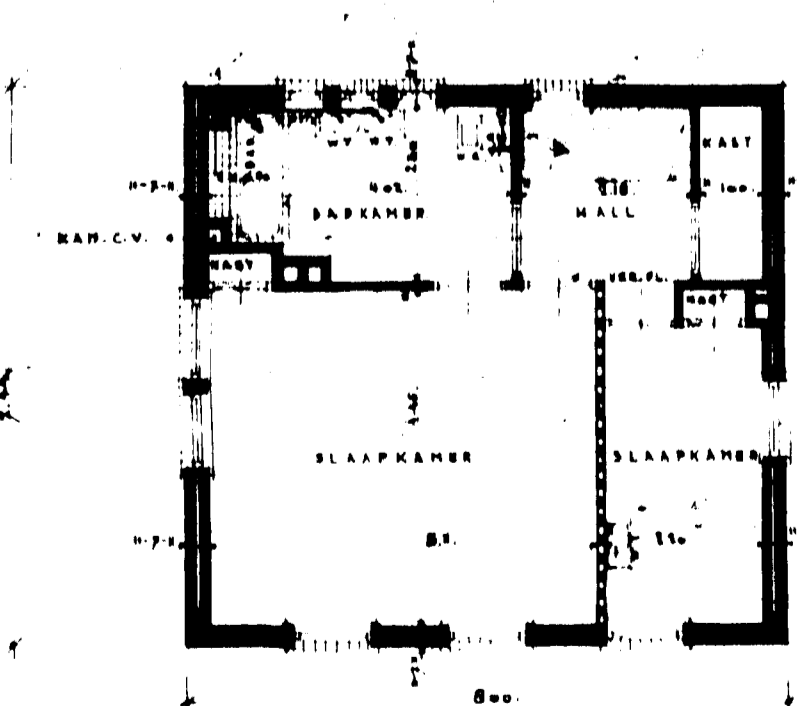


DETAIL A

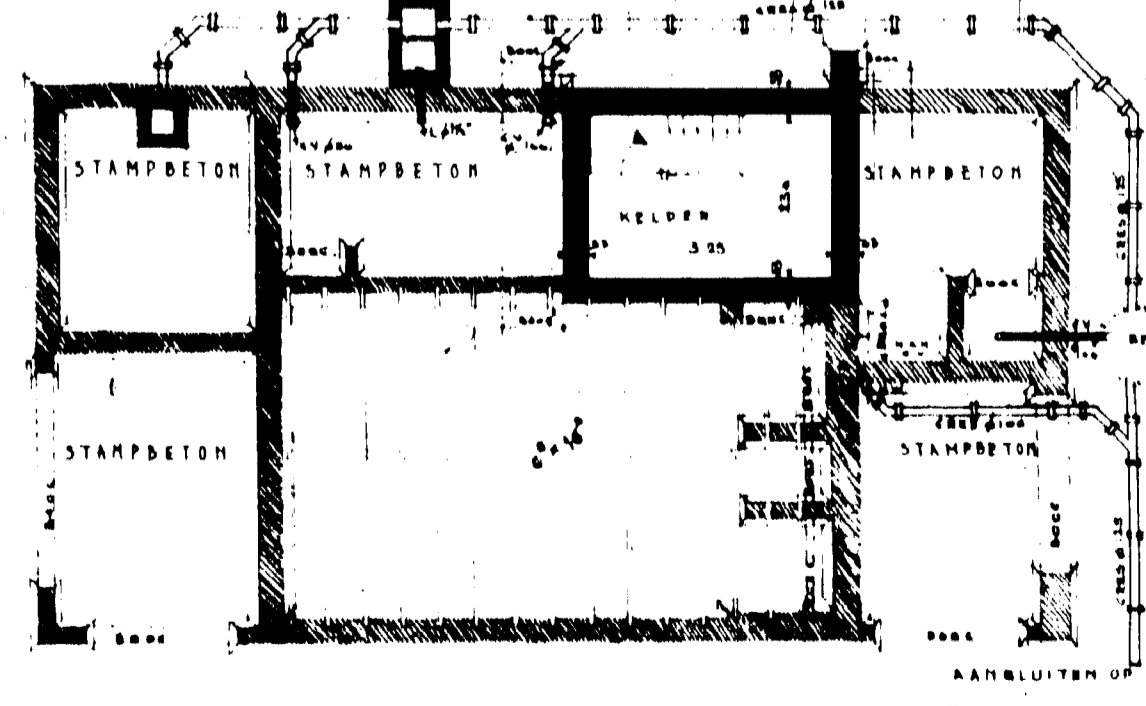
DOORSNED E. OVER KELDER.



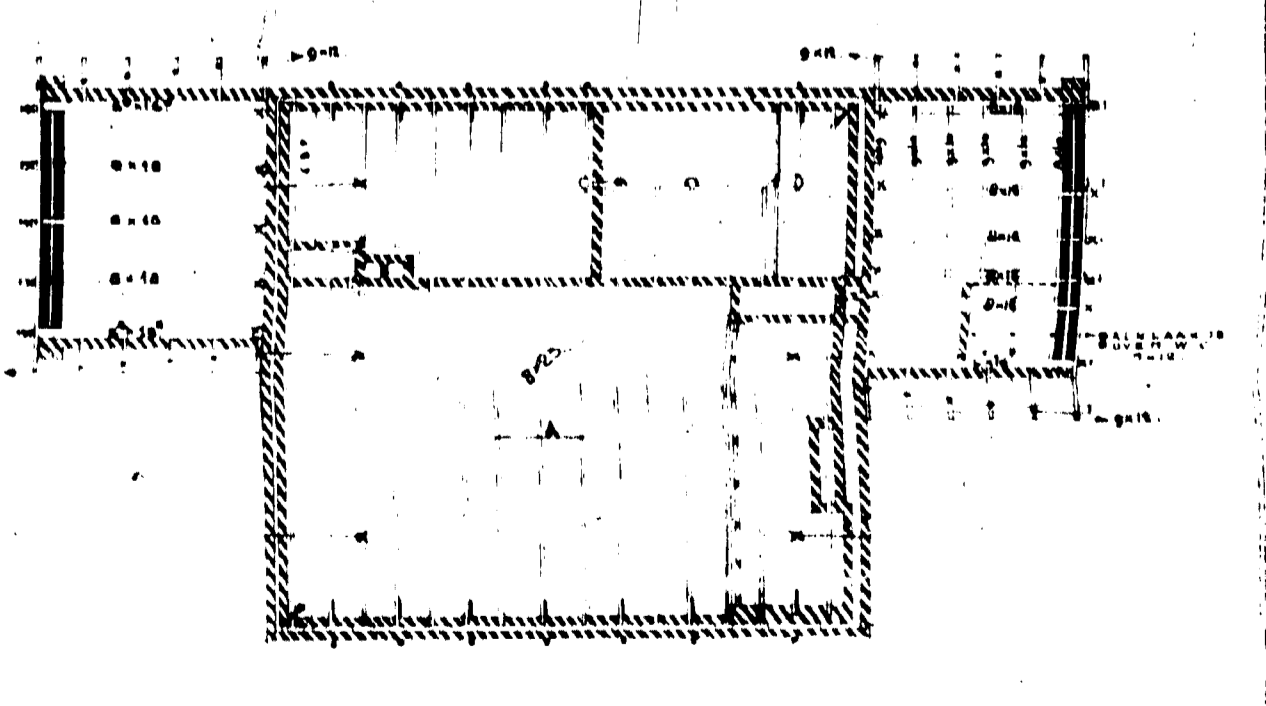
BEGANE GROND



VERDIEPING



FUNDERING EERS' BALKLAAG



TWEDE BALKLAAG.

- TOELICHTING.
- MET SEUWERK.
 - WANPEN VAN HERAKLITH.
 - BETON.
 - S.W. BETON-BALK.
 - G.W. BETON-BLAAT.
 - HAAKANKERS.
 - SCHIETERANKERS.
 - STRUKBALKANKERS.
 - HEMELWATER-AFVOER.
 - W.T. WASCH-TAPEL.
 - G.G. GEASPHATEERD UZEREN-AFVOER.
 - L. LODEN-AFVOER.

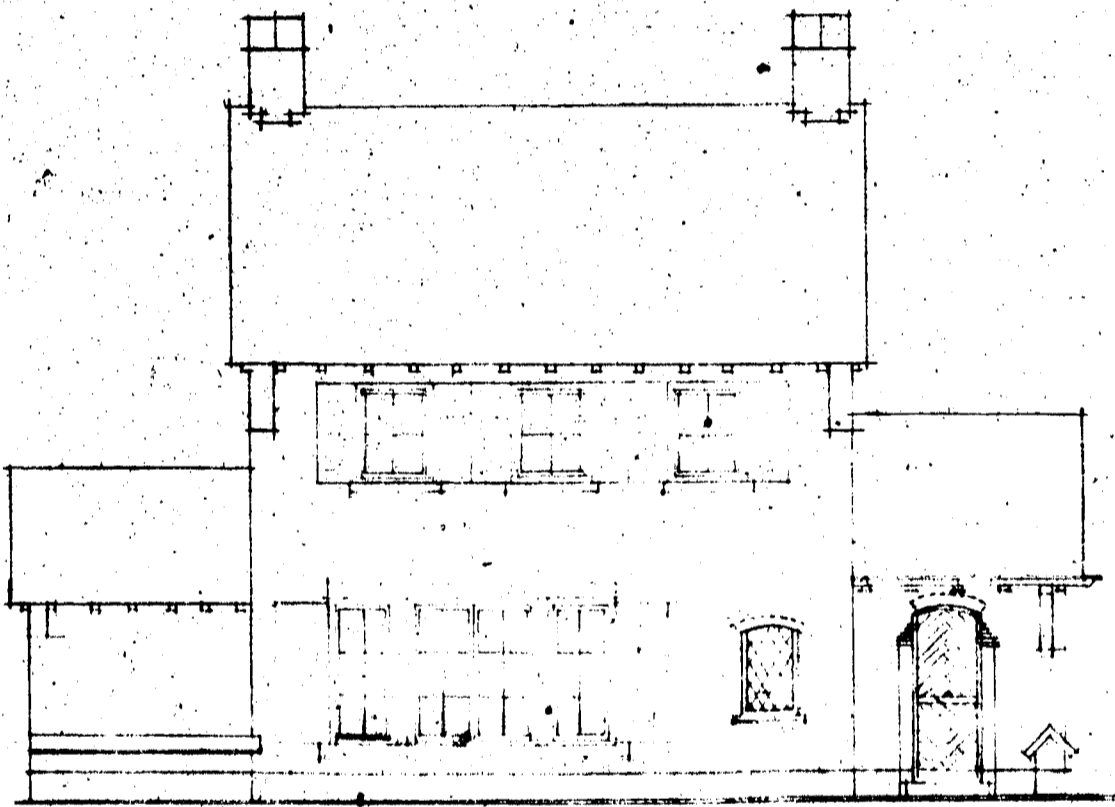
WIJZIGING 1/2 WONING 1/2 WELED HEER A DEKKERS



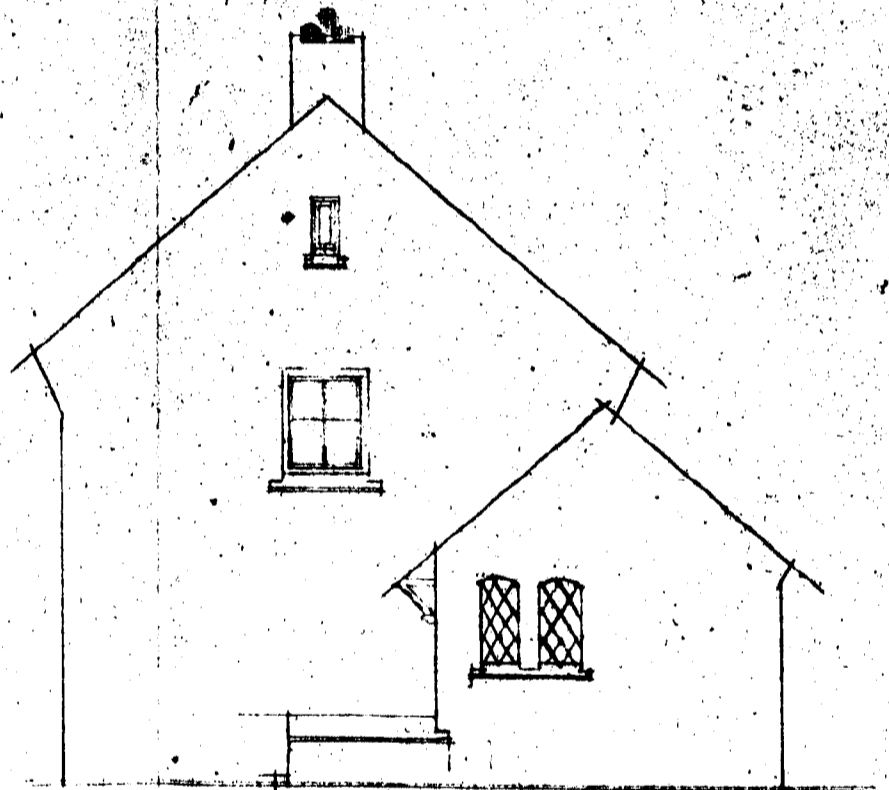
• Achtergevel



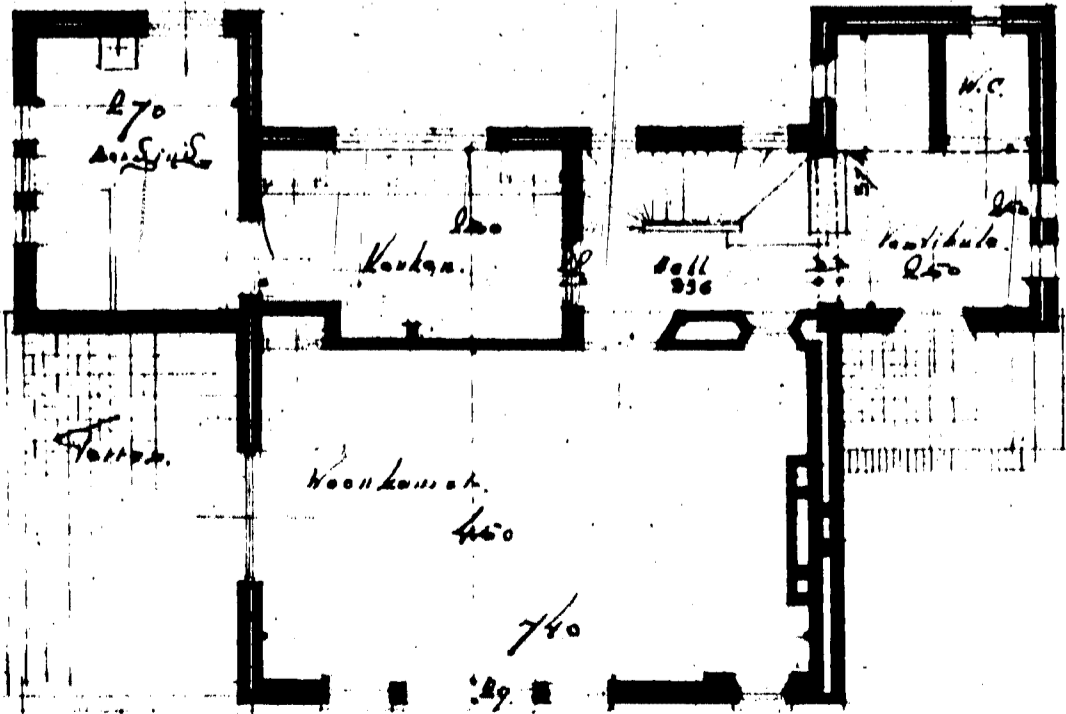
Zijgevel



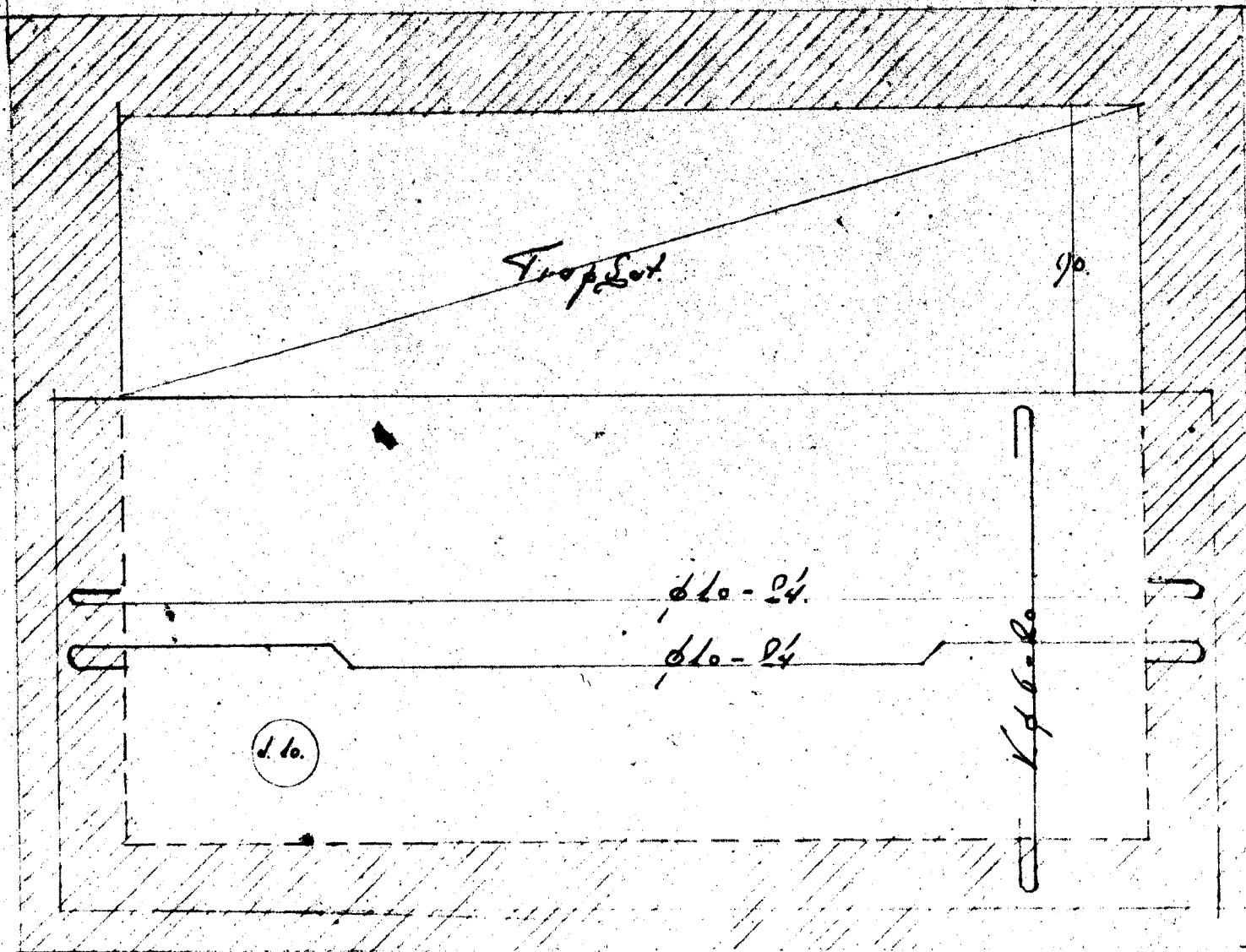
Voorgevel



Zijgevel



Begane Grondplan.



Kelder, Jek. W. Woning, Wd. Welaad,
 door O. Dolkgraaf te Roomoord
 schaal 1:20.

Floer berekening
 spanning max. 2.40 m.

Belasting
 en eig. gew.
 200 kg.
 $q = 2 \text{ kg/cm}$

M. $\frac{3}{8} \times 240 \text{ l.} = 42550$

$h \cdot q = 0.02 \sqrt{42550} \cdot 100 = 6 \text{ cm.}$
 $h = 6 \text{ cm}$

$f_y = 0.0022 \sqrt{42550} \times 100 = 6.5 \text{ cm}^2$
 $\text{Ø } 10 - 12.$